

RUAKAKA TRAVEL CENTRE

LANDSCAPE DESIGN PACKAGE

FOR RESOURCE CONSENT

3 JUNE 2021 - REV H



DOCUMENT QUALITY ASSURANCE

BIBLIOGRAPHIC REFERENCE FOR CITATION:

Boffa Miskell, 2020. *Ruakaka Service Centre, LANDSCAPE DESIGN PACKAGE FOR RESOURCE CONSENT*. Report by Boffa Miskell Limited

PREPARED BY:	Rebecca Freeman Landscape Architect Boffa Miskell Ltd	
REVIEWED BY:	Emma Todd Landscape Architect Boffa Miskell Ltd	
STATUS:FINAL	Revision / version: H	Issue date: 3rd June 2021

File ref: BM19339_Ruakaka_RC_Document

CONTENTS

Landscape Statement

Context Masterplan - Option 1

Masterplan - Option 1

Picnic Park Space

Planting Palette

Tree Planting Strategy

Masterplan - Option 2

3

4

5

6

7

8

9

LANDSCAPE STATEMENT

This rural site is located inland from the coastal town of Ruakaka. Around 30km south of Whangarei on the intersection of SH1 and SH15. This proposed service centre will accommodate the numerous visitors both locally and internationally who travel throughout the Northland region each year. The landscape proposal for this site picks up on the local rural coastal context and looks to provide amenity for a range of visitors. The proposal includes five key elements:

Picnic area / Play space:

Providing spill out from the café in the northern area of the site, this small park area offers a range of elements for different visitors; with a play area, picnic and BBQ facilities and café dining. Small groupings of planting help to create separated spaces which different groups can enjoy within the park. Mounded buffer planting helps to screen the small park space from the surrounding vehicle movements to help create a safe and sheltered pedestrian environment.

Stormwater mitigation:

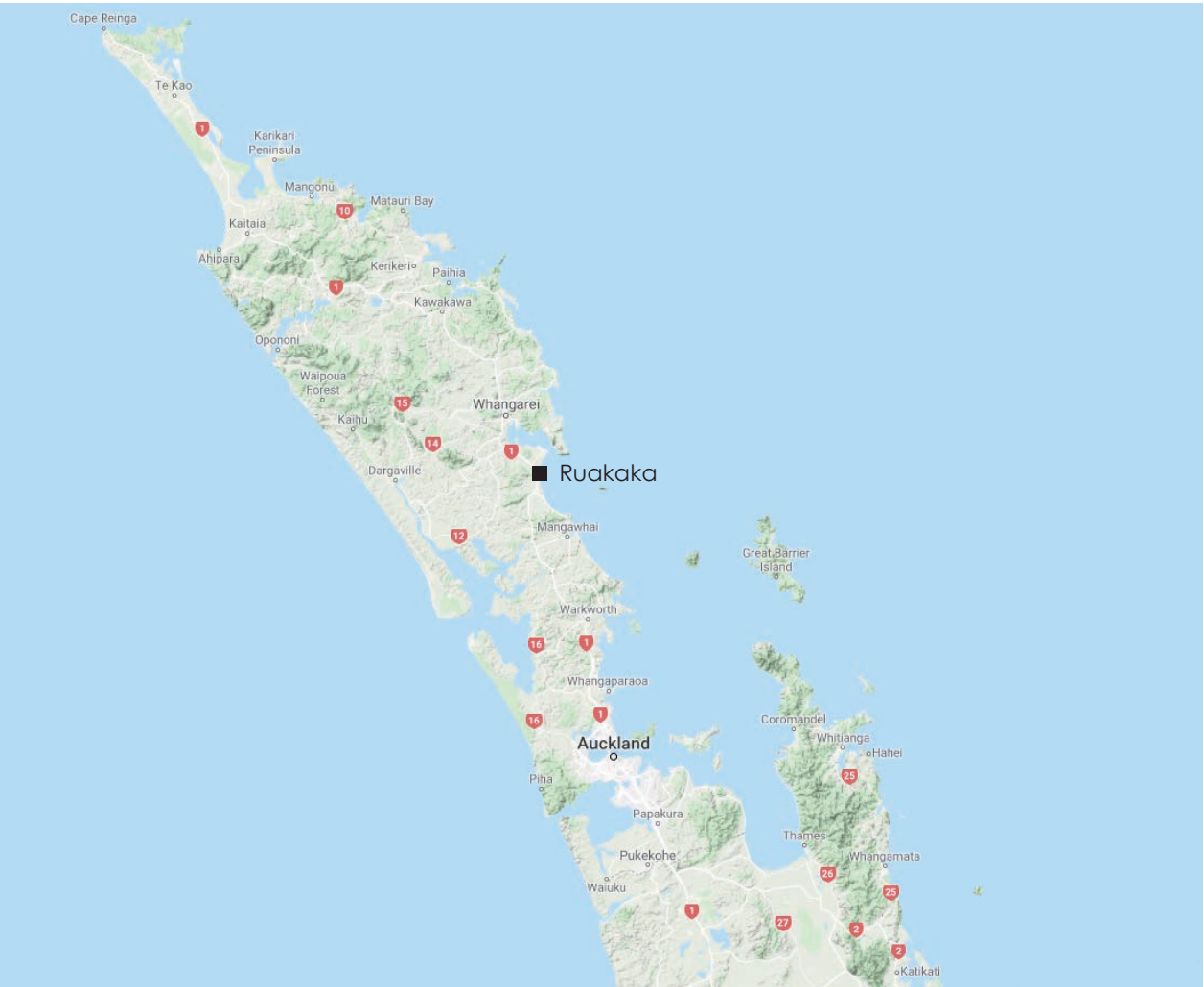
Through the service centre car park there are five proposed rain gardens which are planted in native species to help with filtration of the run off water from the car park and slow water during a rain event. These rain gardens help to soften and break up the car park space.

Stream restoration:

The proposal for this service centre also includes provision to reinforce the health of the existing stream within the paddock to the north of the service centre. Using native naturally occurring riparian species such as Phormium tenax, Cordyline australis and native sedges to restore the habitat and help treat rural run off. The stream will also be fenced to protect from grazing livestock.

Planting:

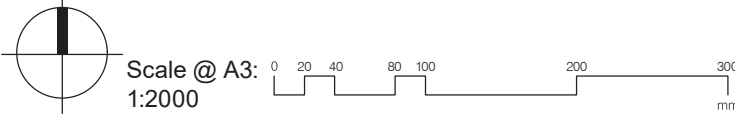
Taking cues from the surrounding landscape context the design references the rural character of tree lined paddocks through specimen tree planting bordering SH1 and SH15. A mix of Puriri trees, Nikau palms and Totara trees complement the surrounding environment. This planted frontage to SH1 and SH15 helps create a visual buffer looking into the service centre. Beneath the tree lines is an understory of largely native grass and flax species which will further enhance this landscape area. The use of the Totara and Kauri trees through the truck parking area provide shade and a visual buffer to the surrounding properties. While through the carpark Karaka trees are used for their relatively quick growth rates and ability to handle damper soil conditions through the rain gardens. The use of these evergreen trees will help to break up the hard car park space. Throughout the site and to the north the planting palette is made up of native grasses and flaxes which offer a lush green palette to compliment the surrounding rural coastal landscape.



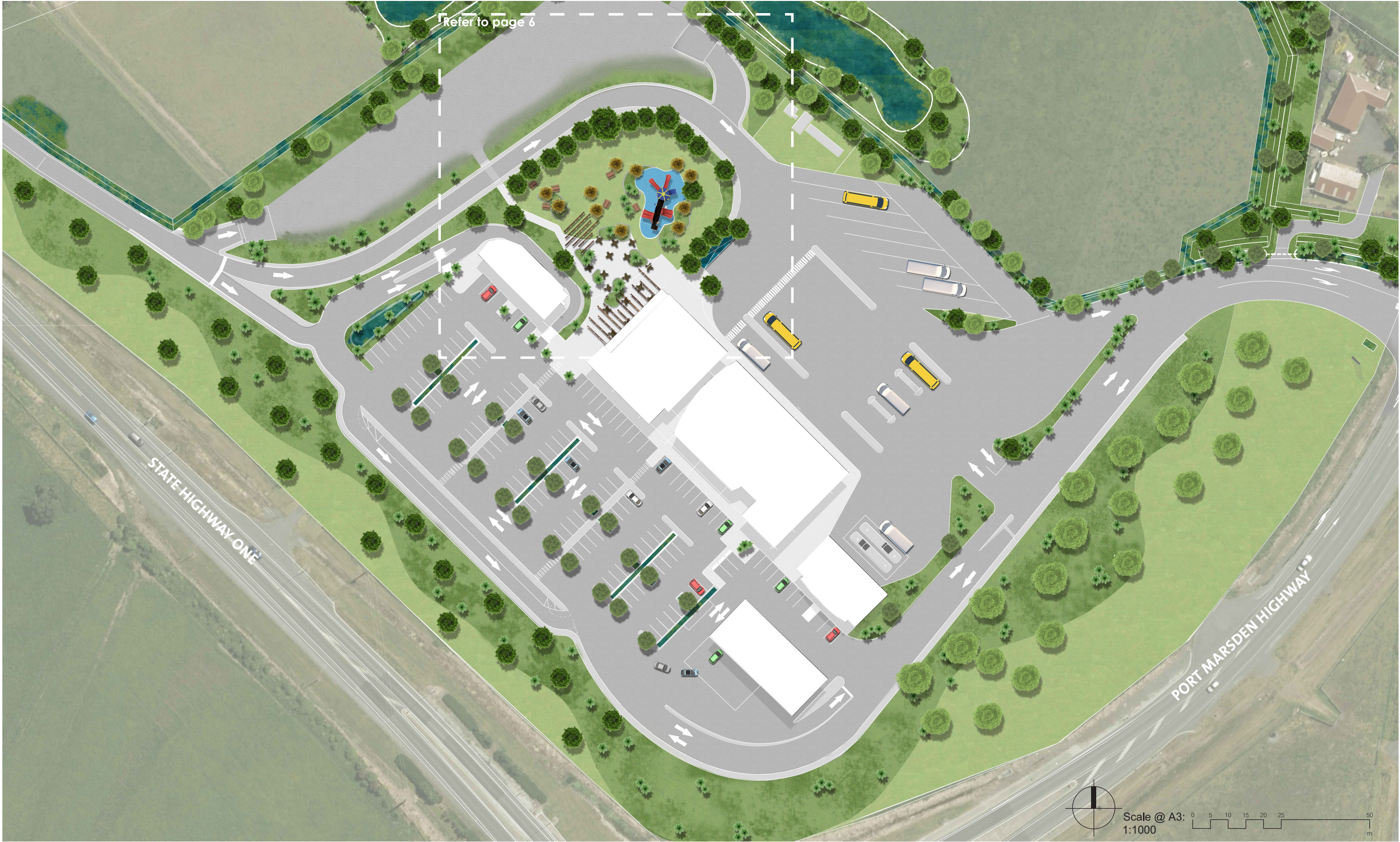
CONTEXT MASTERPLAN - OPTION 1



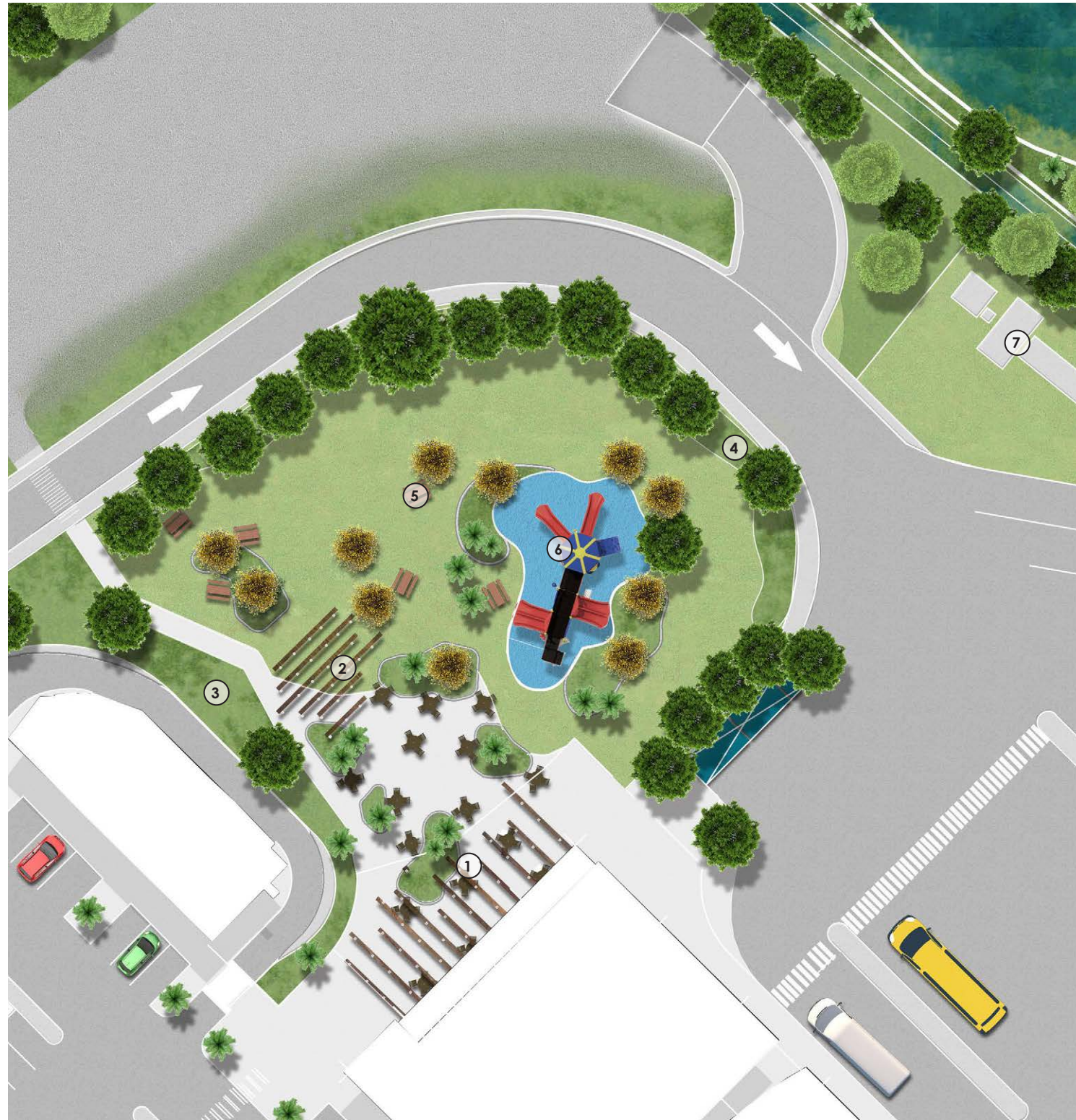
- Legend:**
- ① Cafe interface with picnic and play space
 - ② Sealed truck parking bays
 - ③ Loose metal overflow truck parking area
 - ④ Lawn area with gridded trees
 - ⑤ Car park with raingardens
 - ⑥ Stormwater treatment pond
 - ⑦ Indicative maintenance access for stormwater pond
 - ⑧ Stream restoration planting
 - ⑨ Native planting buffer
 - ⑩ Swale
 - ⑪ Rain Garden
 - ⑫ 2-2.5m High bund with native planting to shelter neighbouring property
 - ⑬ Fenced refuse collection area
 - ⑭ Wastewater plant
 - ⑮ Location of wastewater disposal area
 - ⑯ Areas retained for livestock grazing
 - ⑰ Indicative location of stream crossing to be retained



MASTERPLAN - OPTION 1

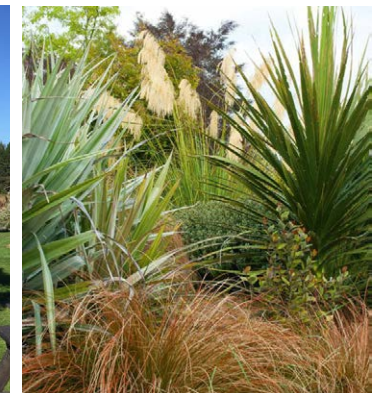


PICNIC PARK SPACE



Legend:

- ① Outdoor dining for cafe
- ② Pergola with BBQ facilities
- ③ Buffer planting from drivethrough
- ④ 1.5m mound with buffer planting to screen from truck route
- ⑤ Picnic tables
- ⑥ Playspace
- ⑦ Wastewater plant



PLANTING PALETTE



Road Side + Buffer Planting

Average width: 15m Minimum width : 5m

Species	Size (L)	Centres (M)	%
<i>Coprosma acerosa</i>	1.5L	0.75m	5
<i>Phormium cookianum</i>	1.5L	1m	10
<i>Phormium tenax</i>	1.5L	1.5m	30
<i>Carex testacea</i>	1.5L	0.4m	10
<i>Apodasmia simillis</i>	1.5L	1m	20
<i>Austroderia toetoe</i>	1.5L	1.5m	10
<i>Astelia nervosa</i>	1.5L	1m	5
<i>Muehlenbeckia astonii</i>	1.5L	0.75m	10

Rain Gardens and Swales

Species	Size (L)	Centres (M)	%
<i>Ficinia nodosa</i>	1.5L	0.7m	30
<i>Apodasmia simillis</i>	1.5L	0.7m	70

Play Area Planting

Species	Size (L)	Centres (M)	%
<i>Phormium cookianum</i>	3L	1m	30
'Green dwarf'			
<i>Lomandra longifolia</i>	3L	0.6m	20
<i>Libertia grandiflora</i>	3L	0.4m	20
<i>Muehlenbeckia axillaris</i>	3L	0.75m	10
<i>Acaena purpurea</i>	3L	0.3m	10
<i>Pittosporum tenuifolium</i>	3L	1m	10
'Golf ball'			

Amenity Planting

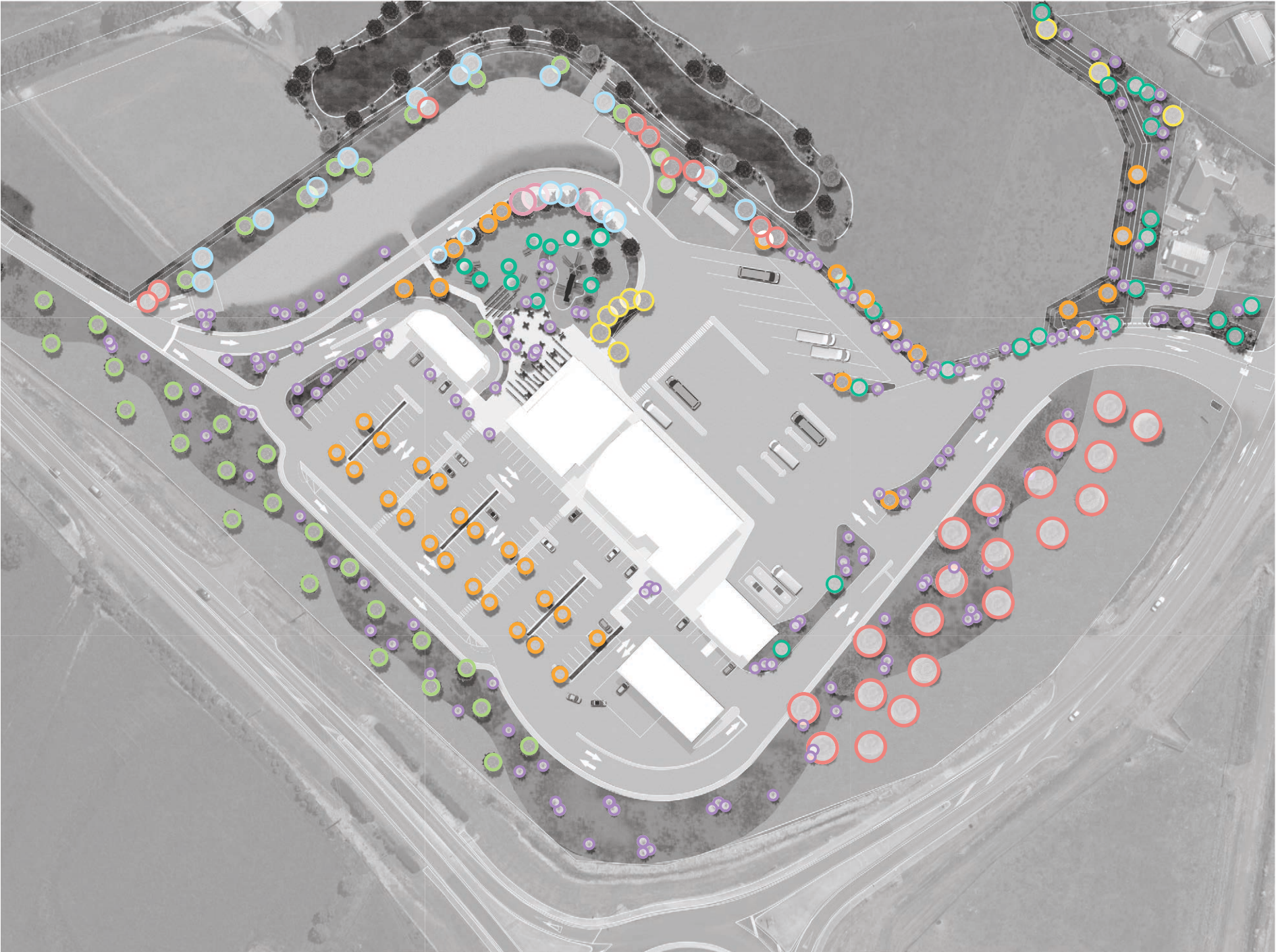
Species	Size (L)	Centres (M)	%
<i>Rhopalostylis sapida</i>	35L	As shown	
<i>Phormium cookianum</i>	3L	1m	30
'Green dwarf'			
<i>Muehlenbeckia astonii</i>	1L	0.3m	25
<i>Dianella nigra</i>	1L	0.6m	20
<i>Astelia banksii</i>	1L	1m	15
<i>Cordyline australis</i>	3L	2m	10

Riparian planting

Wetland / Stream Edge:

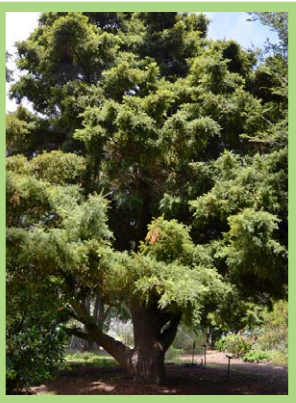
Species	Size (L)	Centres (M)	%
<i>Ficinia nodosa</i>	1L	0.7m	8
<i>Apodasmia simillis</i>	1L	0.7m	10
<i>Juncus pallidus</i>	1L	0.5m	8
<i>Machaerina tenax</i>	1L	0.5m	10
<i>Phormium cookianum</i>	1.5	1m	10
'Emerald Green'			
<i>Leptospermum scoparium</i>	1.5L	1.5m	8
<i>Pittosporum crassifolium</i>	1.5L	1.2m	10
<i>Cordyline australis</i>	5L	1.5m	5
<i>Coprosma robusta</i>	5L	3m	5
<i>Phormium tenax</i>	1.5L	1.5m	15
<i>Dacrycarpus dacrydioides</i>	45L	3m	5
<i>Sophora microphylla</i>	45L	1.5m	2
<i>Beilschmiedia tarairi</i>	45L	2m	2
<i>Vitex lucens</i>	45L	2m	2

TREE PLANTING STRATEGY



Note: Trees used within road side planting buffer are dense forming ever green native trees spaced between 10-15m apart to form an established green buffer.

Tree sizings:	Size (L)
<i>Podocarpus totara</i>	160L
<i>Vitex lucens</i>	160L
<i>Rhopalostylis sapida</i>	35L
<i>Corynocarpus laevigatus</i>	45L
<i>Pittosporum crassifolium</i>	45L
<i>Agathis australis</i>	45L
<i>Dacrycarpus dacrydioides</i>	45L
<i>Sophora microphylla</i>	45L



Podocarpus totara
Totara Tree



Vitex lucens
Puriri



Rhopalostylis sapida
Nikau Palm



Corynocarpus laevigatus
Karakara Tree



Pittosporum crassifolium
Karo Tree



Agathis australis
Kauri



Dacrycarpus dacrydioides
Kahikatea



Sophora microphylla
Kowhai

MASTERPLAN - OPTION 2



Legend:

- ① Cafe interface with picnic and play space
- ② Sealed truck parking bays
- ③ Loose metal overflow truck parking area
- ④ Lawn area with gridded trees
- ⑤ Car park with raingardens
- ⑥ Stormwater treatment pond
- ⑦ Indicative maintenance access for stormwater pond
- ⑧ Stream restoration planting
- ⑨ Native planting buffer
- ⑩ Swale
- ⑪ Rain Garden
- ⑫ 2-2.5m High bund with native planting to shelter neighbouring property
- ⑬ Fenced refuse collection area
- ⑭ Wastewater plant
- ⑮ Location of wastewater disposal area
- ⑯ Areas retained for livestock grazing
- ⑰ Indicative location of stream crossing to be retained



Scale @ A3: 1:2000

0 20 40 80 100 200 300 mm

About Boffa Miskell

Boffa Miskell is a leading New Zealand professional services consultancy with offices in Auckland, Hamilton, Tauranga, Wellington, Christchurch, Dunedin and Queenstown. We work with a wide range of local and international private and public sector clients in the areas of planning, urban design, landscape architecture, landscape planning, ecology, biosecurity, cultural heritage, graphics and mapping. Over the past four decades we have built a reputation for professionalism, innovation and excellence. During this time we have been associated with a significant number of projects that have shaped New Zealand's environment.

www.boffamiskell.co.nz

Auckland	Hamilton	Tauranga	Wellington	Christchurch	Queenstown	Dunedin
09 358 2526	07 960 0006	07 571 5511	04 385 9315	03 366 8891	03 441 1670	03 470 0460