

HURUPAKI HEIGHTS APPLICATION

THREE MILE BUSH ROAD | WHANGĀREI



HURUPAKI HEIGHTS APPLICATION



HURUPAKI HEIGHTS APPLICATION



HURUPAKI HEIGHTS APPLICATION



HURUPAKI HEIGHTS APPLICATION



HURUPAKI HEIGHTS APPLICATION



HURUPAKI HEIGHTS APPLICATION



HURUPAKI HEIGHTS APPLICATION



HURUPAKI HEIGHTS APPLICATION



HURUPAKI HEIGHTS APPLICATION



HURUPAKI HEIGHTS APPLICATION



HURUPAKI HEIGHTS APPLICATION



HURUPAKI HEIGHTS APPLICATION



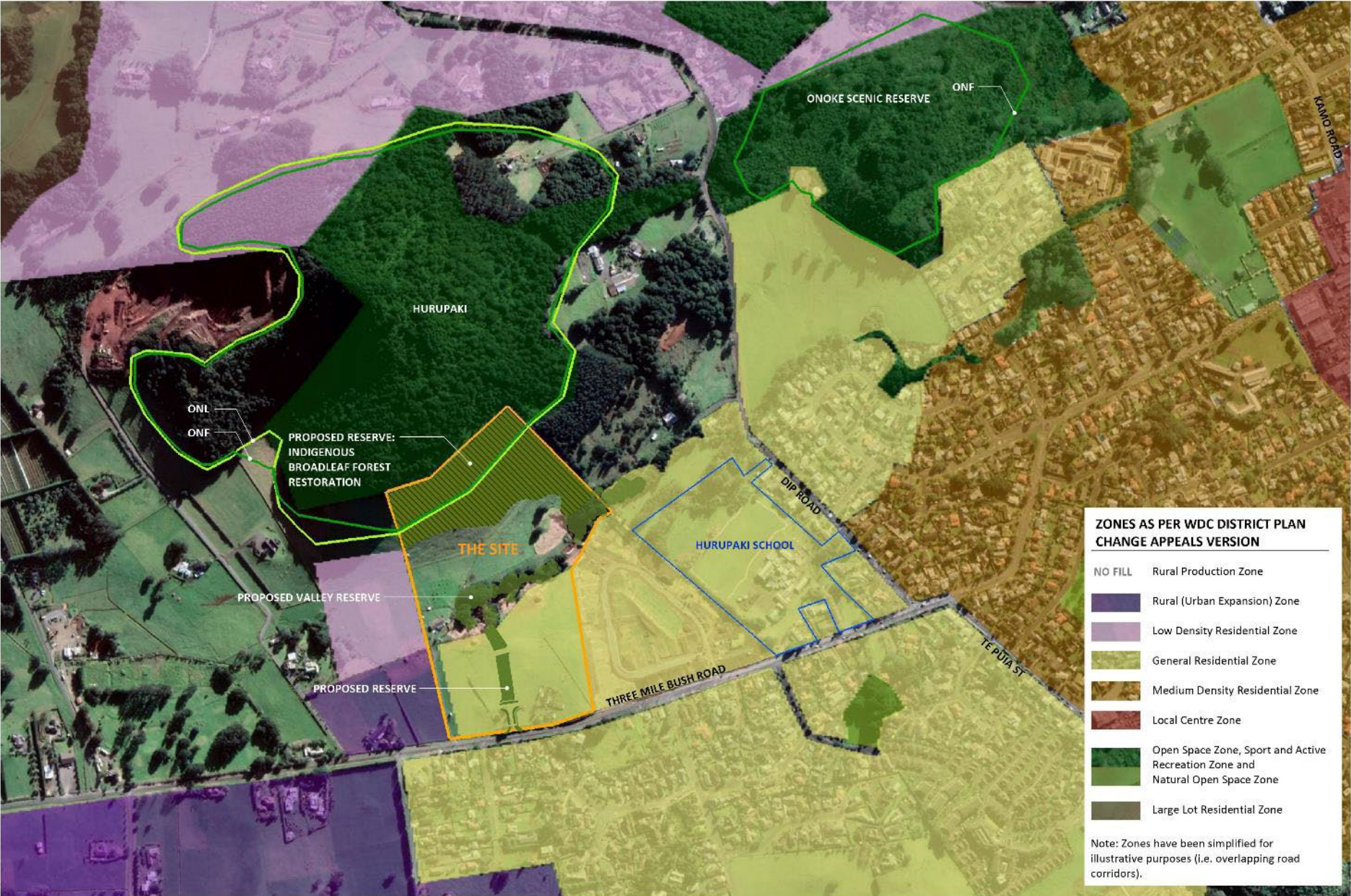
HURUPAKI HEIGHTS APPLICATION



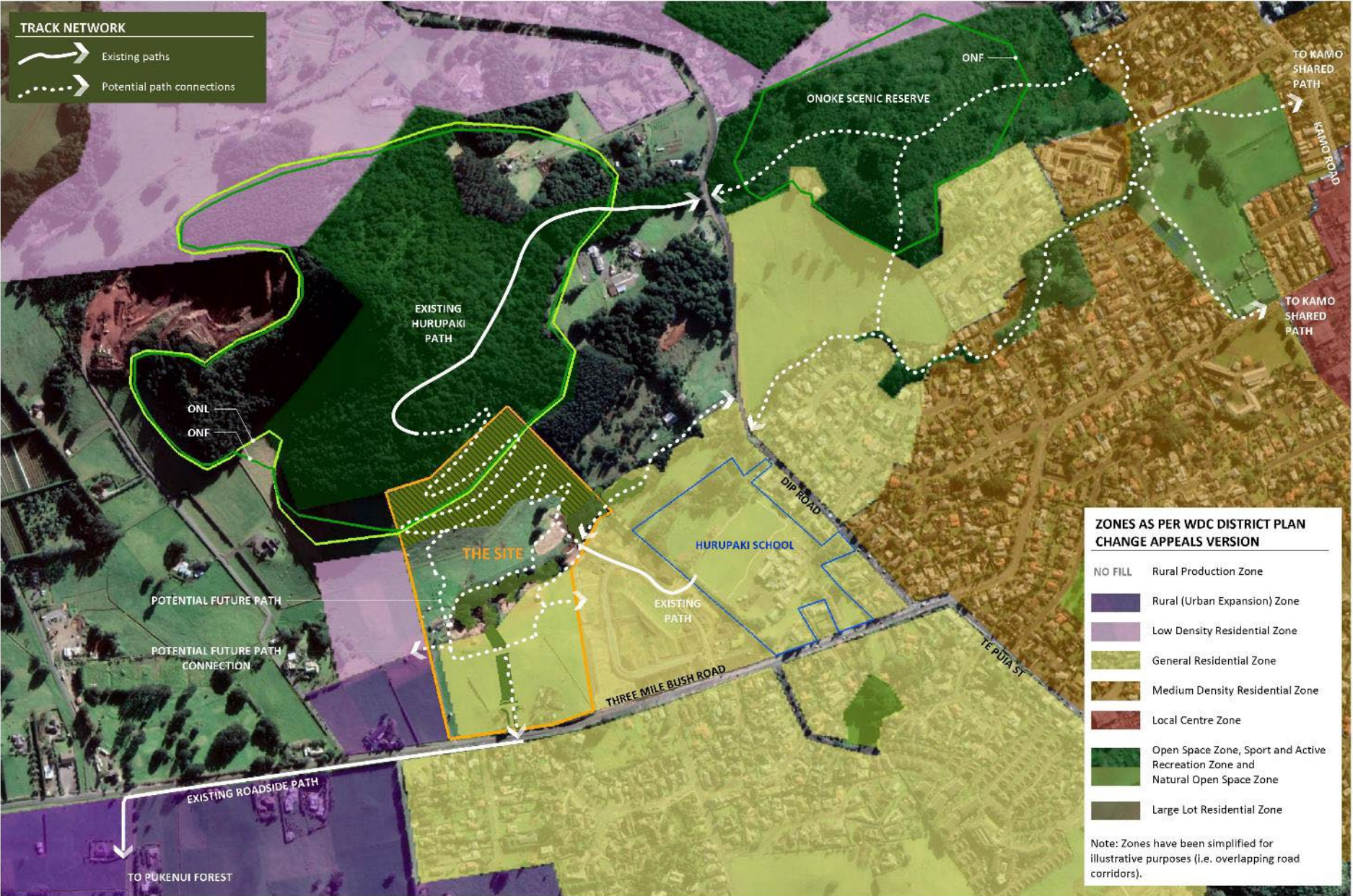
HURUPAKI HEIGHTS APPLICATION



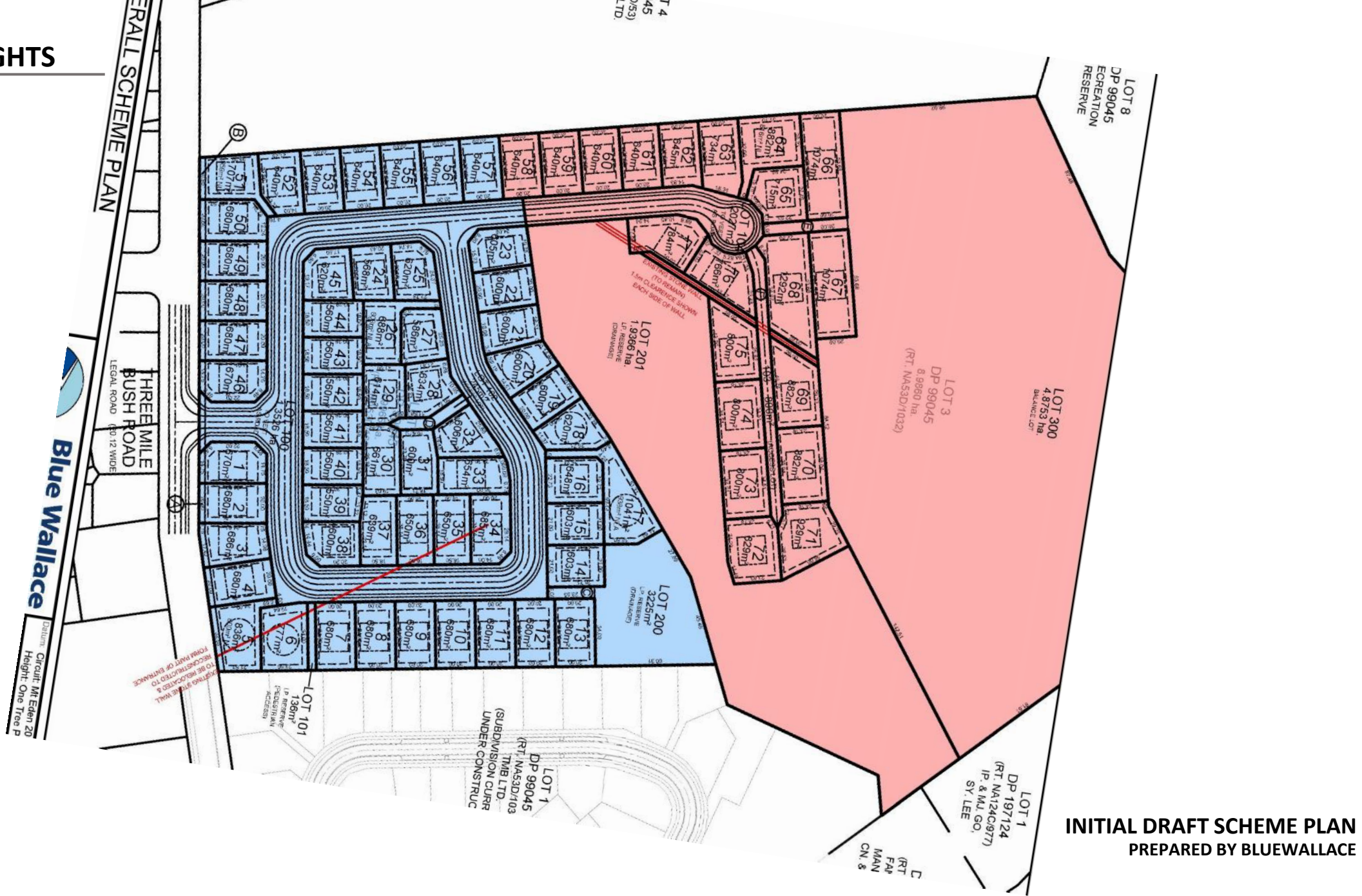
HURUPAKI HEIGHTS APPLICATION



HURUPAKI HEIGHTS APPLICATION



HURUPAKI HEIGHTS APPLICATION



INITIAL DRAFT SCHEME PLAN
PREPARED BY BLUEWALLACE

HURUPAKI HEIGHTS APPLICATION



HURUPAKI HEIGHTS APPLICATION



HURUPAKI HEIGHTS APPLICATION



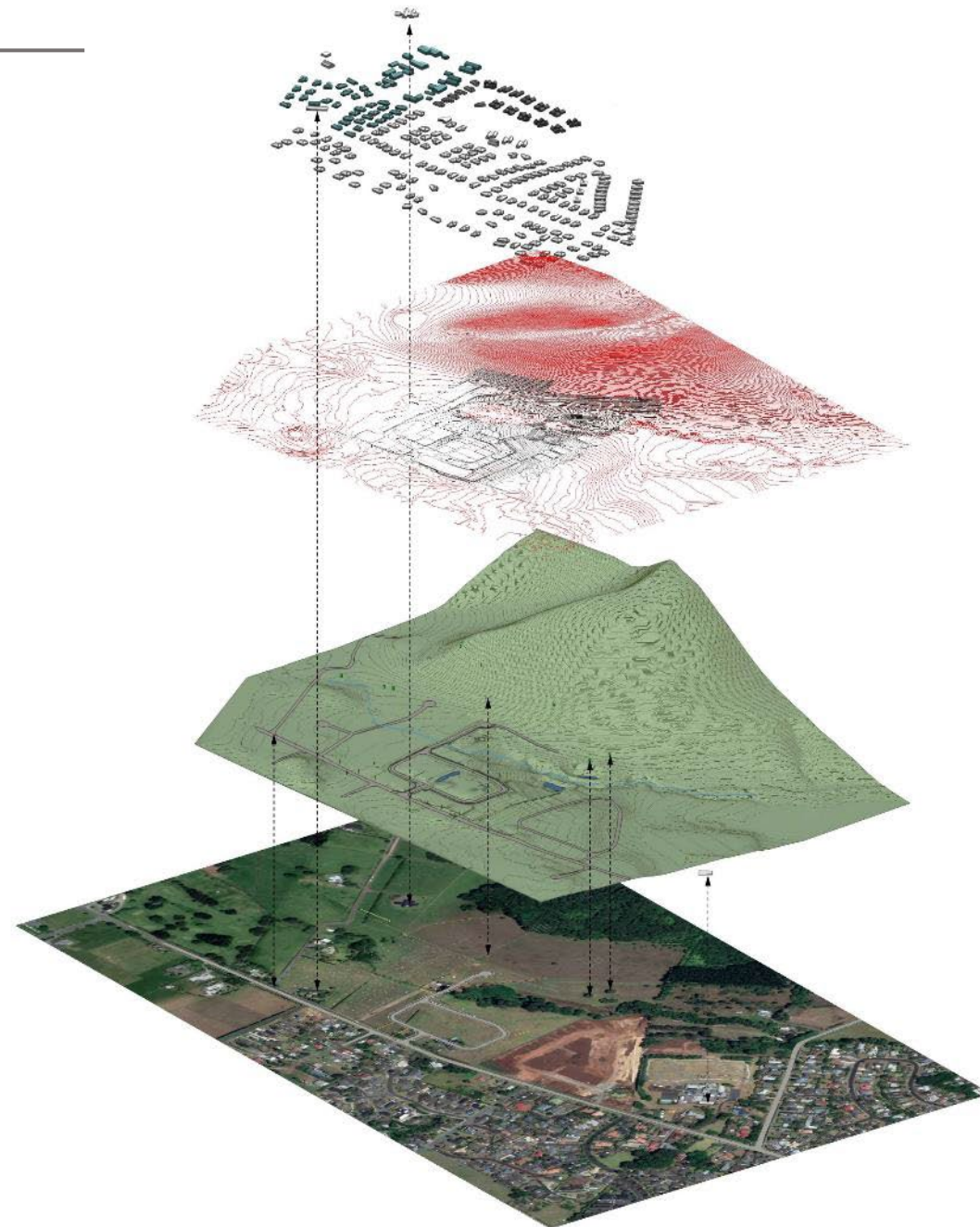
HURUPAKI HEIGHTS APPLICATION



HURUPAKI HEIGHTS APPLICATION



SIMULATIONS



Building models
Existing and proposed

Contour information
LIDAR (red)
Proposed site contours provided
by Bluewallace (black)

Digital Terrain Model
Existing landmarks (water tank,
buildings, roads and trees)
inserted to align model views with
panoramic photographs*

Aerial Photograph
Cadastre
Scheme Plan

DIGITAL TERRAIN MODEL

*Majority of contour information in this area pre-dates
The James subdivision, contour source LIDAR.



Indicative view from south west at approx. 140m elevation above GL.

DIGITAL TERRAIN MODEL



Indicative view from south east at approx. 120m elevation above GL.





























