

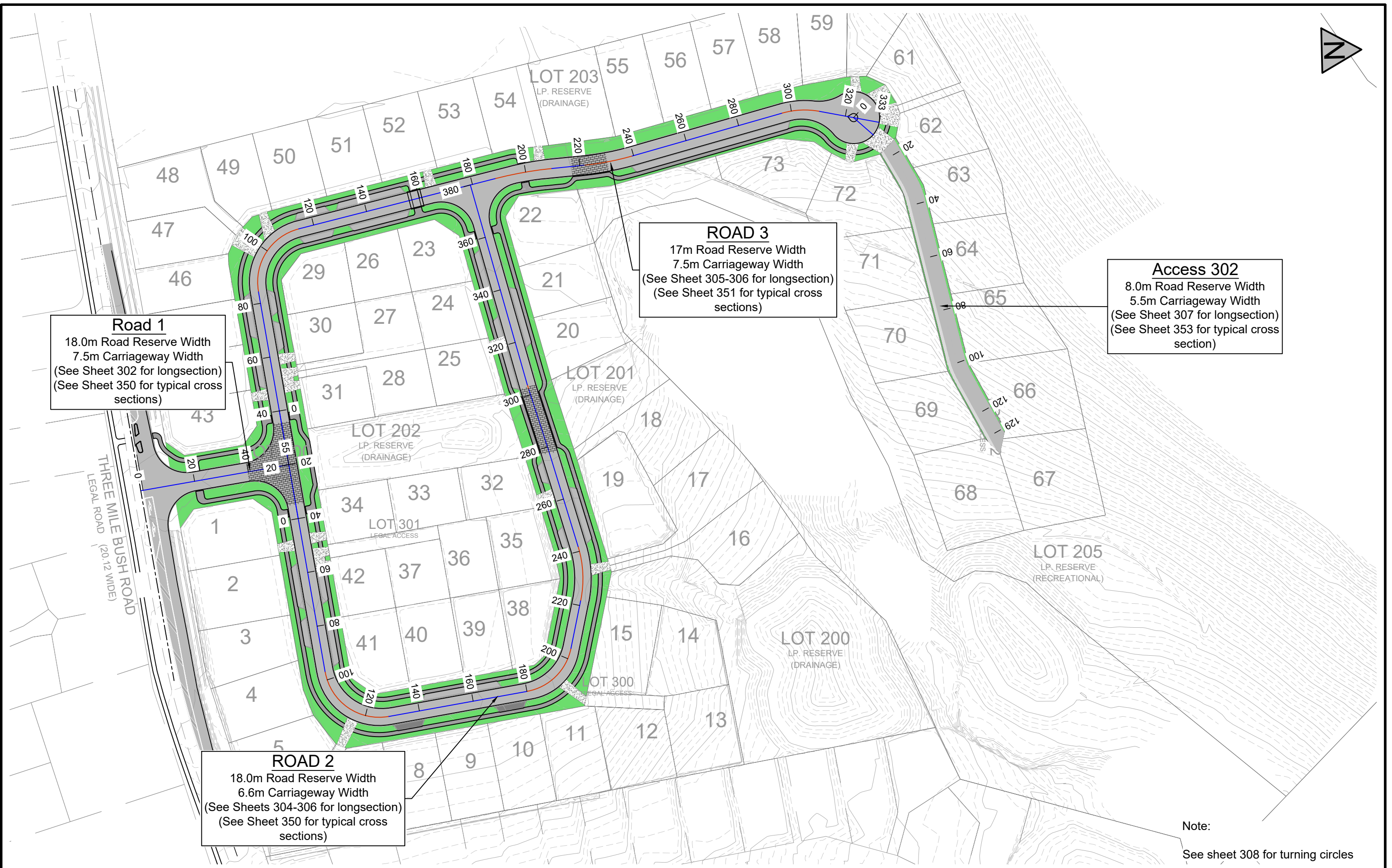
**Road 1**  
 18.0m Road Reserve Width  
 7.5m Carriageway Width  
 (See Sheet 302 for longsection)  
 (See Sheet 350 for typical cross sections)

**ROAD 3**  
 17m Road Reserve Width  
 7.5m Carriageway Width  
 (See Sheet 305-306 for longsection)  
 (See Sheet 351 for typical cross sections)

**Access 302**  
 8.0m Road Reserve Width  
 5.5m Carriageway Width  
 (See Sheet 307 for longsection)  
 (See Sheet 353 for typical cross section)

**ROAD 2**  
 18.0m Road Reserve Width  
 6.6m Carriageway Width  
 (See Sheets 304-306 for longsection)  
 (See Sheet 350 for typical cross sections)

Note:  
 See sheet 308 for turning circles



Size	A3	Scale	1:1250	Date	July 2021
No.	Amendment	Init.	Date	Designed	JMC
1	Issued for resource consent		29/07/21	Drawn	JMC
2	Updated Road Curve Radii	JMC	19/08/21	Checked	
3	Removed Lots 62, 63 & 69	JMC	30/03/22	Approved	

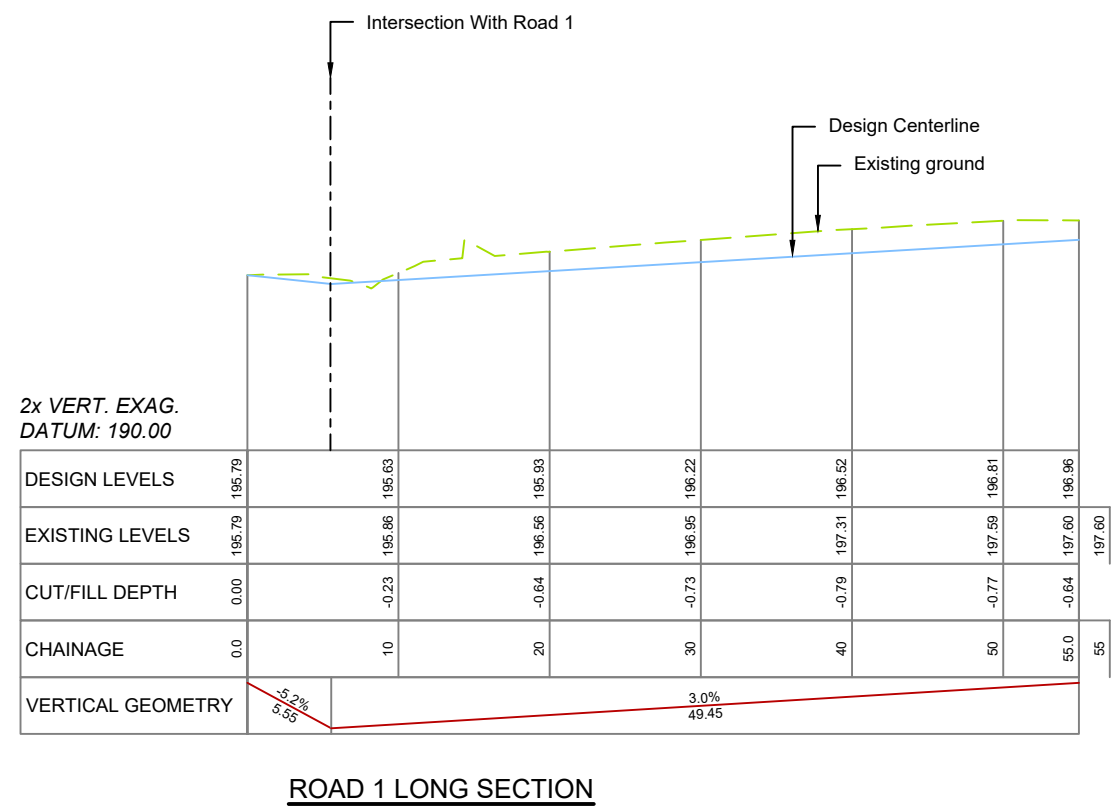
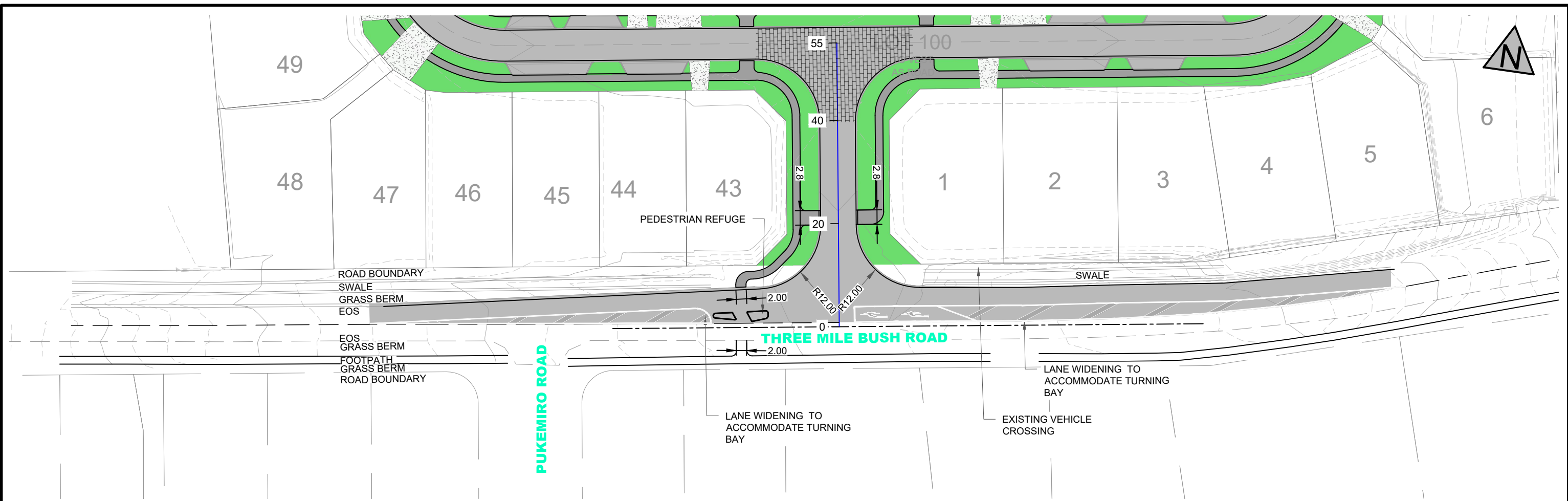
**Resource Consent**  
**Roading Overall Layout**  
 189 Three Mile Bush Road, Kamo, Whangarei  
 Prepared for: Hurupaki Holdings Ltd



**Blue Wallace**  
**Surveyors Ltd.**  
 25 Harwood Street, P O Box 38,  
 Hamilton Central, HAMILTON.  
 Phone (07) 839 7799, Fax (07) 839 4455

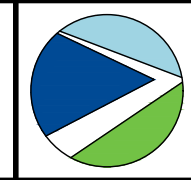
Datum: Circuit: Mt Eden 2000	
Height: One Tree Point Datum	
Resource Consent Number:	
.....	
BW Ref.	Stg. Purp. Dwg. # Revision:
20183-01-RC-300	3

S:\2020\2018302\_ENGINEERING\1\_DRAWINGS\PLOTTING DRAWINGS\20183-EN-01-300-0-ROADING.DWG



Size	A3	Scale	1:500	Date	July 2021		
No.	Amendment	Init.	Date	Designed	JMC		
1	Issued for resource consent		29/07/21	Drawn	JMC		
2	Updated Road Curve Radii	JMC	19/08/21	Checked			
3	Removed Lots 62, 63 & 69	JMC	30/03/22	Approved			

**Resource Consent**  
**Road 1 Longsection and Layout**  
 189 Three Mile Bush Road, Kamo, Whangarei  
 Prepared for: Hurupaki Holdings Ltd

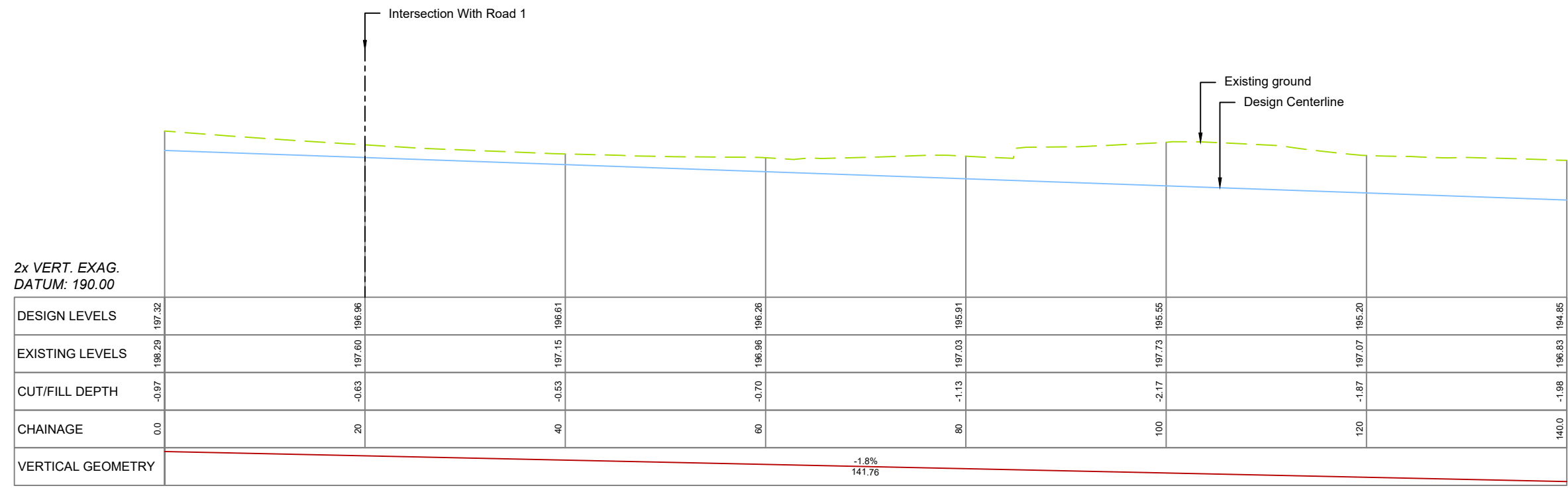
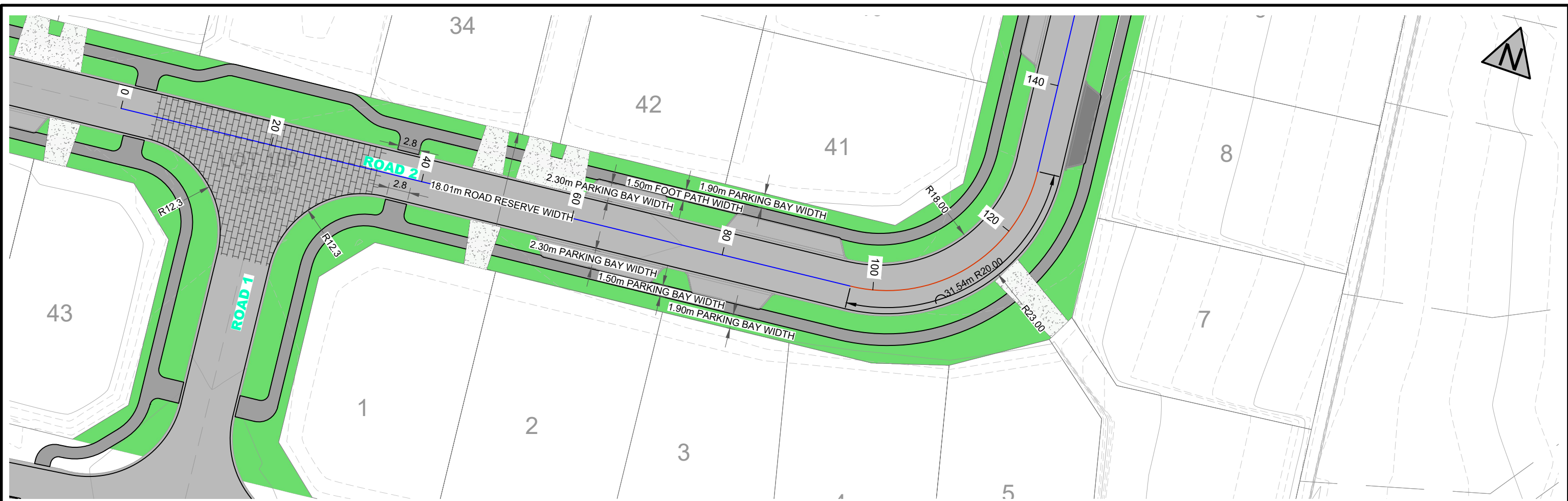


**Blue Wallace Surveyors Ltd.**  
 25 Harwood Street, P O Box 38,  
 Hamilton Central, HAMILTON.  
 Phone (07) 839 7799, Fax (07) 839 4455

Datum: Circuit: Mt Eden 2000 Height: One Tree Point Datum			
Resource Consent Number:			
BW Ref.	Stg.	Purp.	Dwg. #
			20183-01-RC-301
Revision:			
	3		

S:\2020\20183-01-RC-301-ROADING.DWG

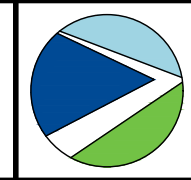




ROAD 2 LONG SECTION

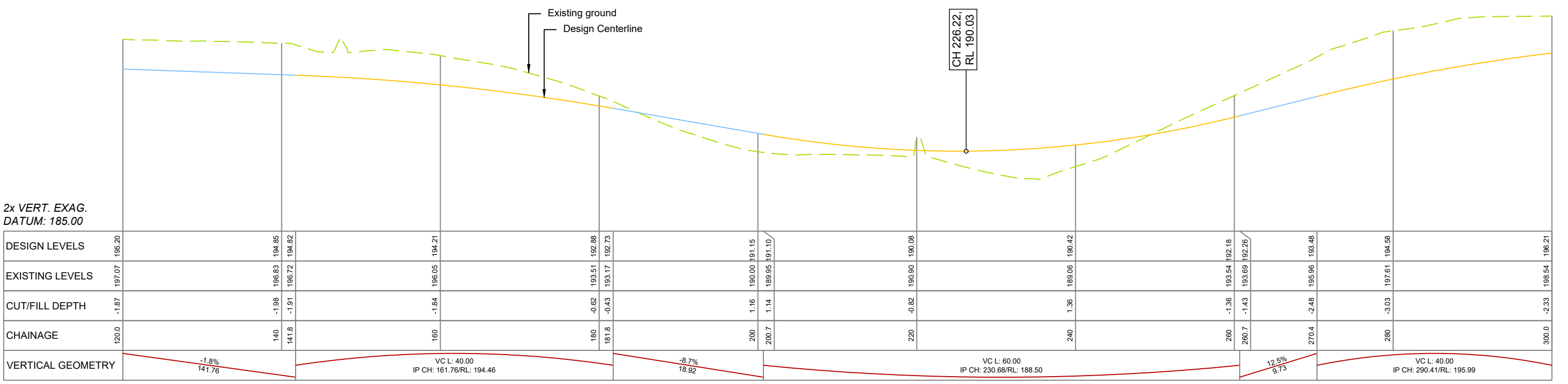
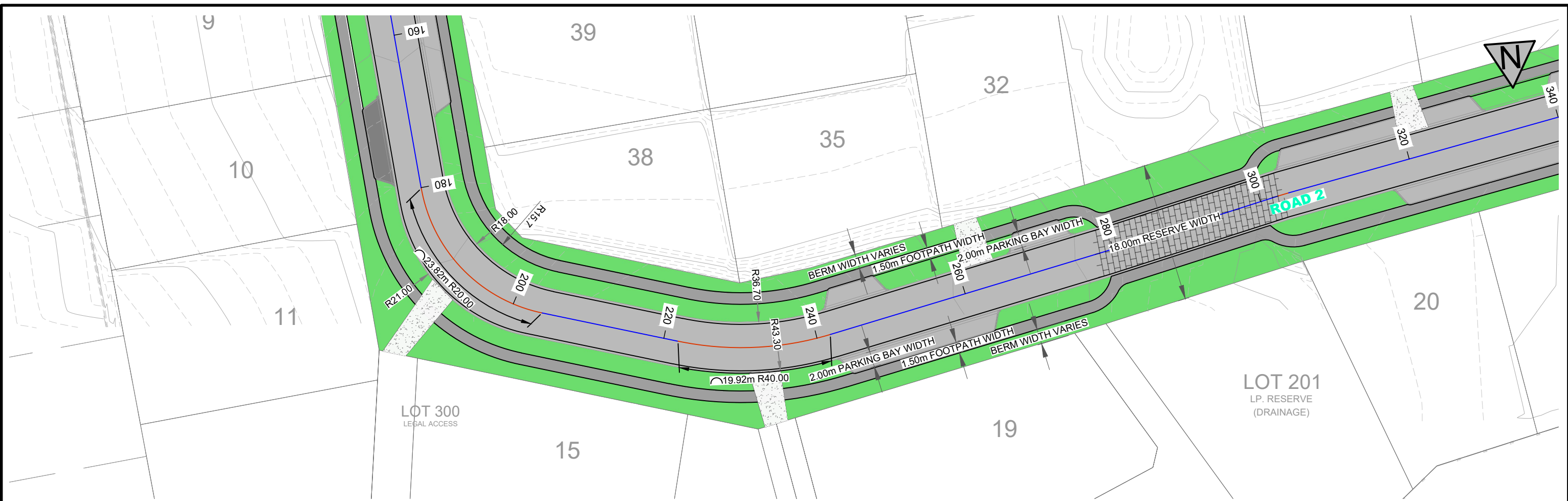
Size	A3	Scale	1:500	Date	July 2021		
No.	Amendment	Init.	Date	Designed	JMC		
1	Issued for resource consent		29/07/21	Drawn	JMC		
2	Updated Road Curve Radii	JMC	19/08/21	Checked			
3	Removed Lots 62, 63 & 69	JMC	30/03/22	Approved			

Resource Consent  
 Road 2 Longsection and Layout (1 of 3)  
 189 Three Mile Bush Road, Kamo, Whangarei  
 Prepared for: Hurupaki Holdings Ltd



**Blue Wallace Surveyors Ltd.**  
 25 Harwood Street, P O Box 38,  
 Hamilton Central, HAMILTON.  
 Phone (07) 839 7799, Fax (07) 839 4455

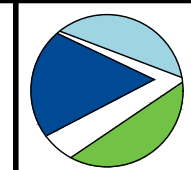
Datum: Circuit: Mt Eden 2000 Height: One Tree Point Datum	
Resource Consent Number: .....	
BW Ref.	Stg. Purp. Dwg. # Revision:
20183-01-RC-302	3



ROAD 2 LONG SECTION

Size	A3	Scale	1:500	Date	July 2021
No.	Amendment	Init.	Date	Designed	JMC
1	Issued for resource consent		29/07/21	Drawn	JMC
2	Updated Road Curve Radii	JMC	19/08/21	Checked	
3	Removed Lots 62, 63 & 69	JMC	30/03/22	Approved	

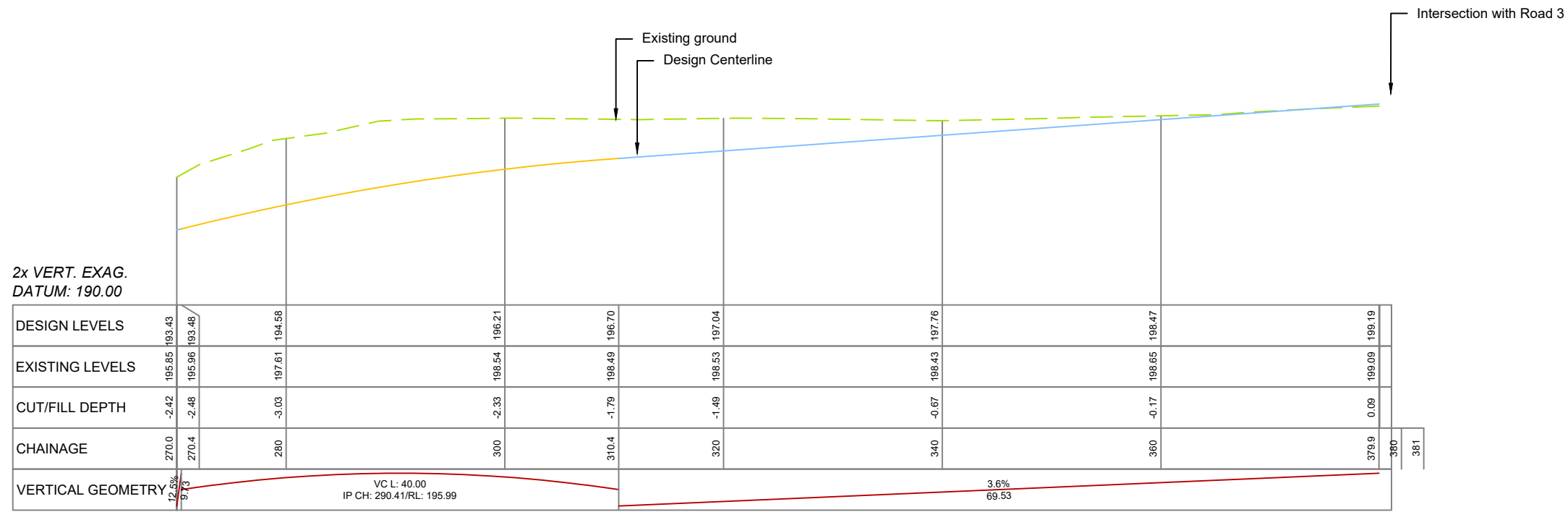
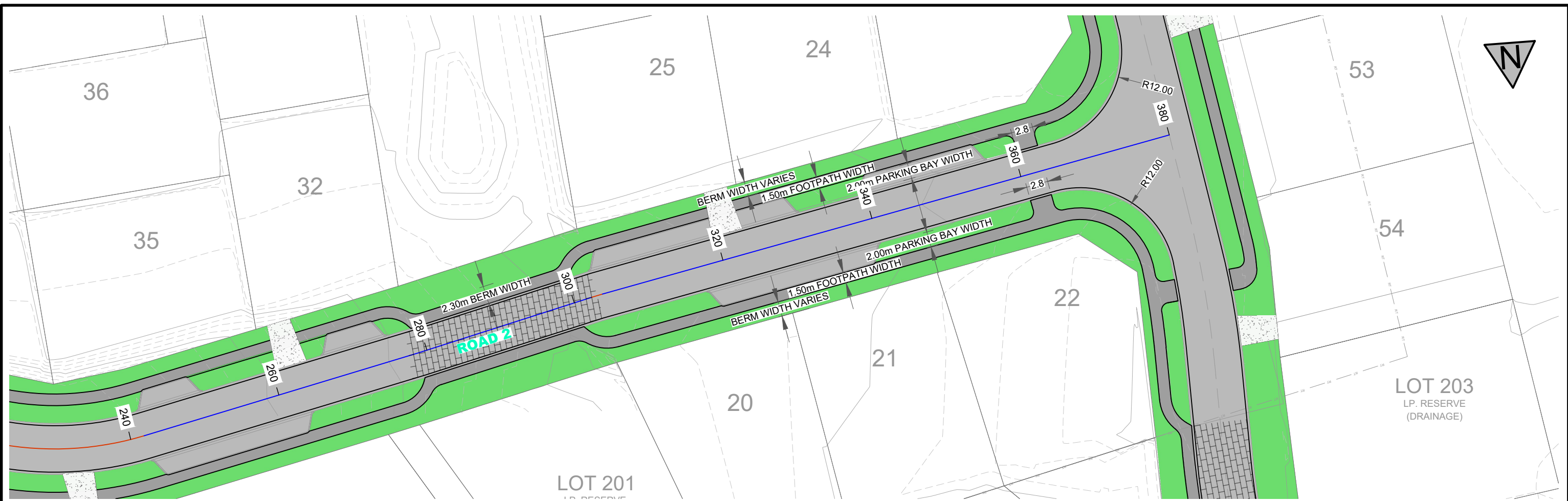
**Resource Consent**  
**Road 2 Longsection and Layout (2 of 3)**  
 189 Three Mile Bush Road, Kamo, Whangarei  
 Prepared for: Hurupaki Holdings Ltd



**Blue Wallace Surveyors Ltd.**  
 25 Harwood Street, P O Box 38,  
 Hamilton Central, HAMILTON.  
 Phone (07) 839 7799, Fax (07) 839 4455

Datum: Circuit: Mt Eden 2000	
Height: One Tree Point Datum	
Resource Consent Number:	
BW Ref.	Stg. Purp. Dwg. # Revision:
20183-01-RC-303	3

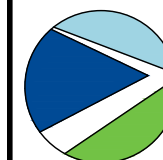
S:\2020\2018302\_ENGINEERING\1\_DRAWINGS\1\_PLOTTING DRAWINGS\20183-EN-01-300-0-ROADING.DWG



ROAD 2 LONG SECTION

Size	A3	Scale	1:500	Date	July 2021		
No.	Amendment	Init.	Date	Designed	JMC		
1	Issued for resource consent		29/07/21	Drawn	JMC		
2	Updated Road Curve Radii	JMC	19/08/21	Checked			
3	Removed Lots 62, 63 & 69	JMC	30/03/22	Approved			

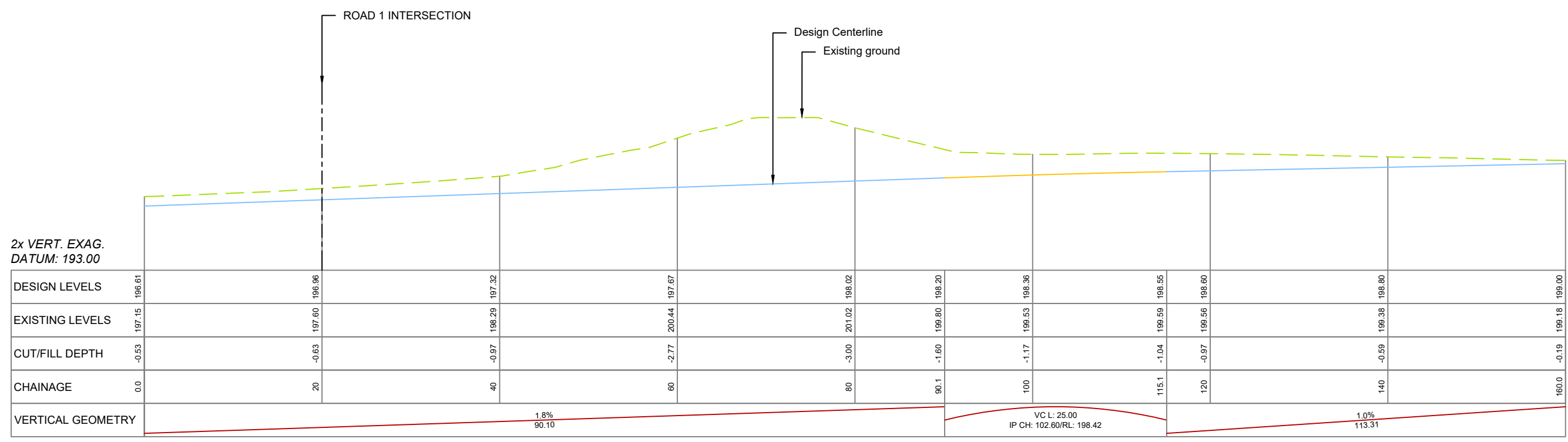
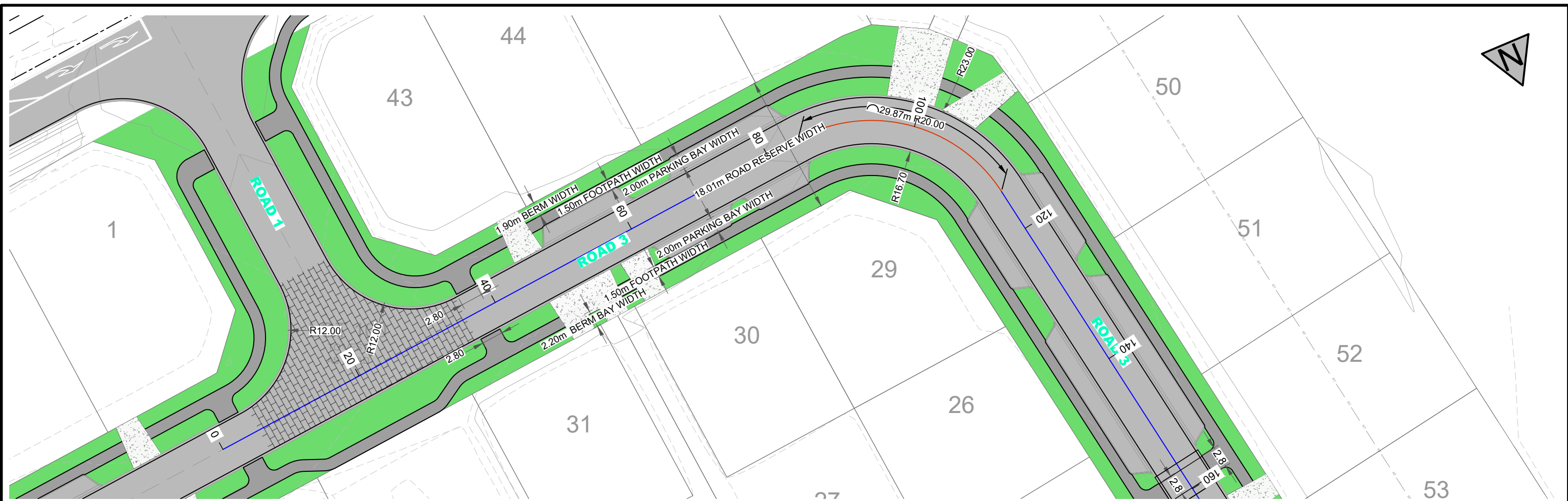
**Resource Consent**  
**Road 2 Longsection and Layout (3 of 3)**  
 189 Three Mile Bush Road, Kamo, Whangarei  
 Prepared for: Hurupaki Holdings Ltd



**Blue Wallace Surveyors Ltd.**  
 25 Harwood Street, P O Box 38,  
 Hamilton Central, HAMILTON.  
 Phone (07) 839 7799, Fax (07) 839 4455

Datum: Circuit: Mt Eden 2000	
Height: One Tree Point Datum	
Resource Consent Number: .....	
BW Ref.	Stg. Purp. Dwg. # Revision:
20183-01-RC-304	3

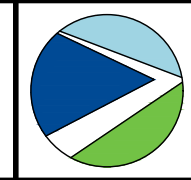




**ROAD 3 LONG SECTION**

Size	A3	Scale	1:500	Date	July 2021		
No.	Amendment	Init.	Date	Designed	JMC		
1	Issued for resource consent		29/07/21	Drawn	JMC		
2	Updated Road Curve Radii	JMC	19/08/21	Checked			
3	Removed Lots 62, 63 & 69	JMC	30/03/22	Approved			

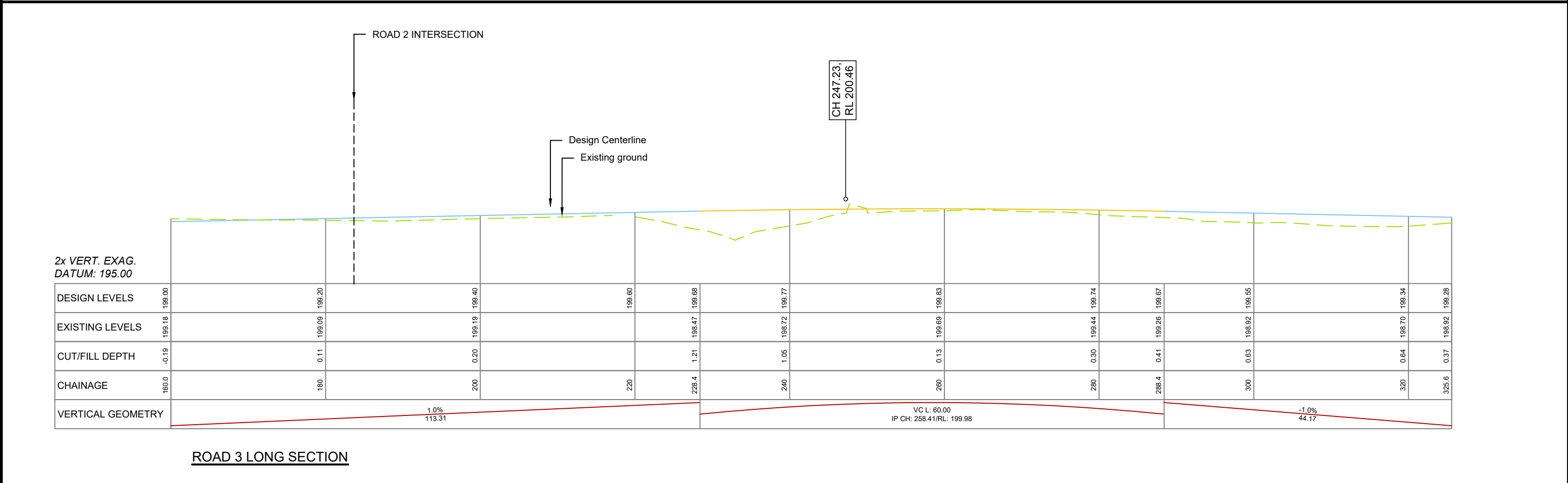
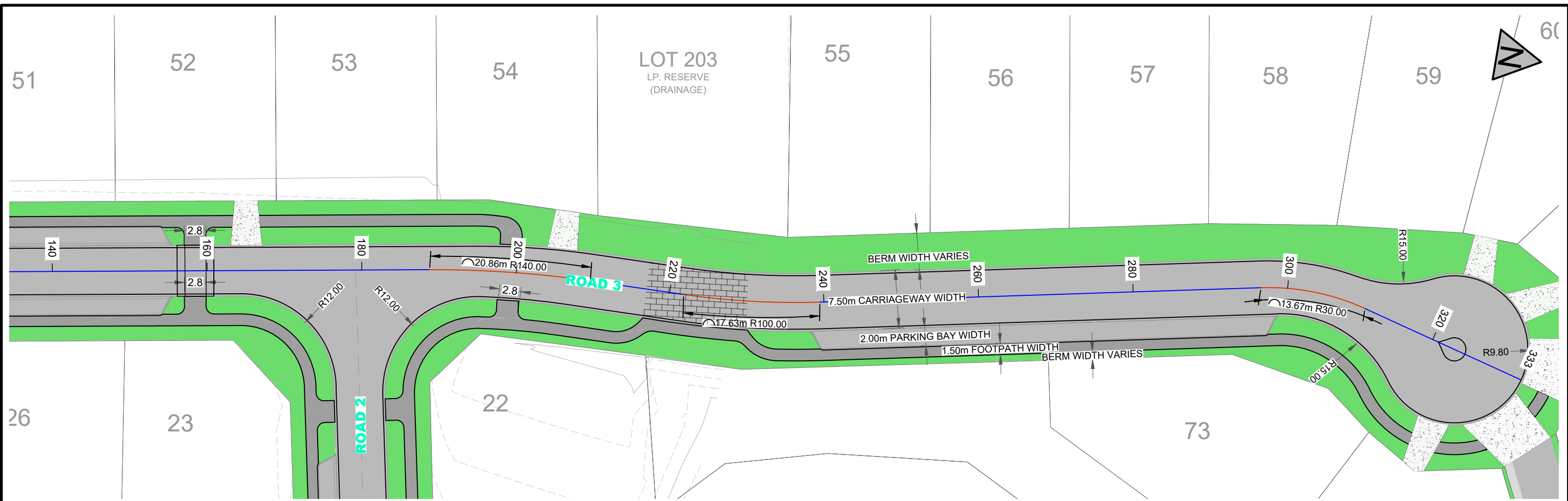
**Resource Consent**  
**Road 3 Longsection and Layout (1 of 2)**  
 189 Three Mile Bush Road, Kamo, Whangarei  
 Prepared for: Hurupaki Holdings Ltd



**Blue Wallace Surveyors Ltd.**  
 25 Harwood Street, P O Box 38,  
 Hamilton Central, HAMILTON.  
 Phone (07) 839 7799, Fax (07) 839 4455

Datum: Circuit: Mt Eden 2000	
Height: One Tree Point Datum	
Resource Consent Number: .....	
BW Ref.	Stg. Purp. Dwg. # Revision:
20183-01-RC-305	3

S:\2020\2018302\_ENGINEERING\1\_DRAWINGS\1\_PLOTTING DRAWINGS\20183-EN-01-300-0-ROADING.DWG

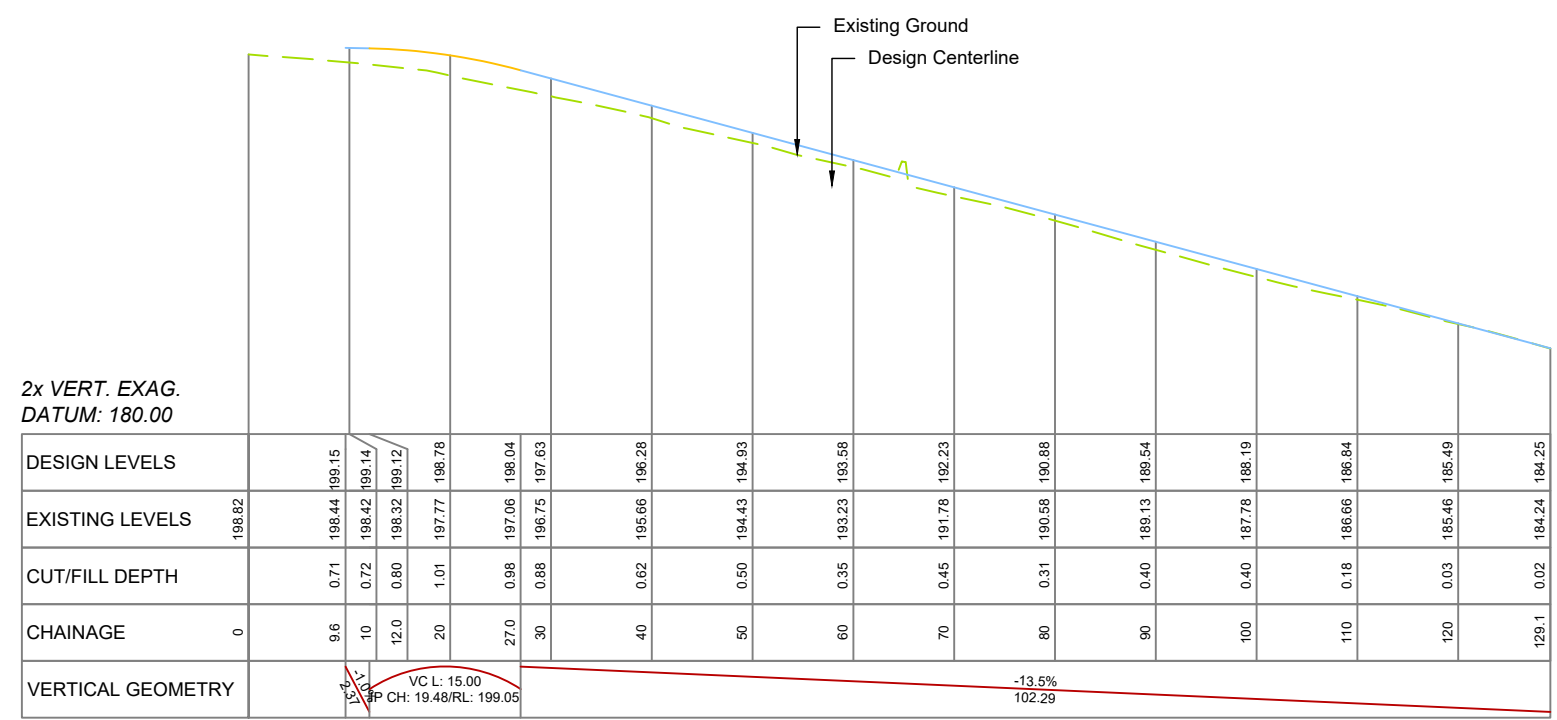
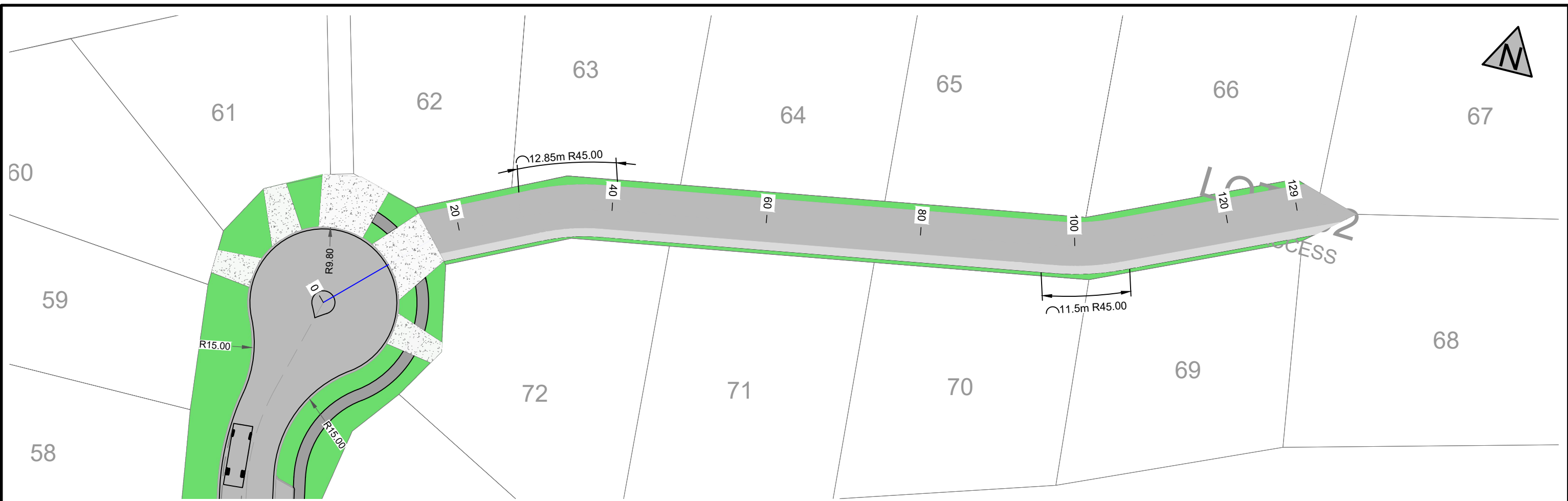


Size	A3	Scale	1:500	Date	July 2021
No.	Amendment	Init.	Date	Designed	JMC
1	Issued for resource consent	JMC	29/07/21	Drawn	JMC
2	Updated Road Curve Radii	JMC	19/08/21	Checked	
3	Removed Lots 62, 63 & 69	JMC	30/03/22	Approved	

**Resource Consent**  
**Road 2 Longsection and Layout (2 of 2)**  
 189 Three Mile Bush Road, Kamo, Whangarei  
 Prepared for: Hurupaki Holdings Ltd

**Blue Wallace Surveyors Ltd.**  
 25 Harwood Street, P O Box 38,  
 Hamilton Central, HAMILTON.  
 Phone (07) 839 7799, Fax (07) 839 4455

Datum: Circuit: Mt Eden 2000 Height: One Tree Point Datum			
Resource Consent Number: .....			
BW Ref.	Stg.	Purp.	Dwg. #
20183-01-RC-306			3



ROW 301 LONG SECTION

Size	A3	Scale	1:750	Date	July 2021
No.	Amendment	Init.	Date	Designed	JMC
1	Issued for resource consent	JMC	29/07/21	Drawn	JMC
2	Updated Road Curve Radii	JMC	19/08/21	Checked	
3	Removed Lots 62, 63 & 69	JMC	30/03/22	Approved	

**Resource Consent**  
**Access Lot 302 Longsection and Layout**  
 189 Three Mile Bush Road, Kamo, Whangarei  
 Prepared for: Hurupaki Holdings Ltd

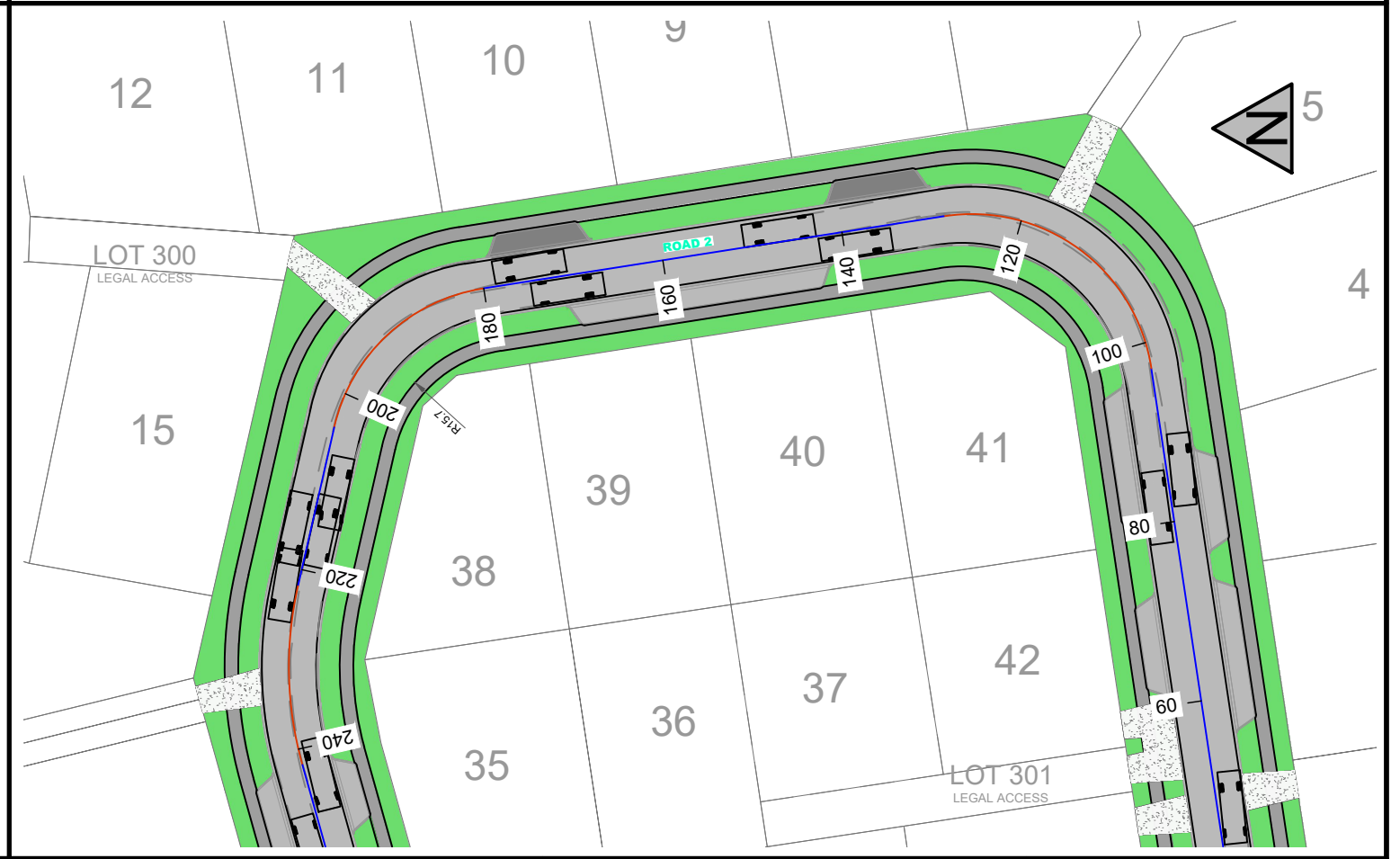
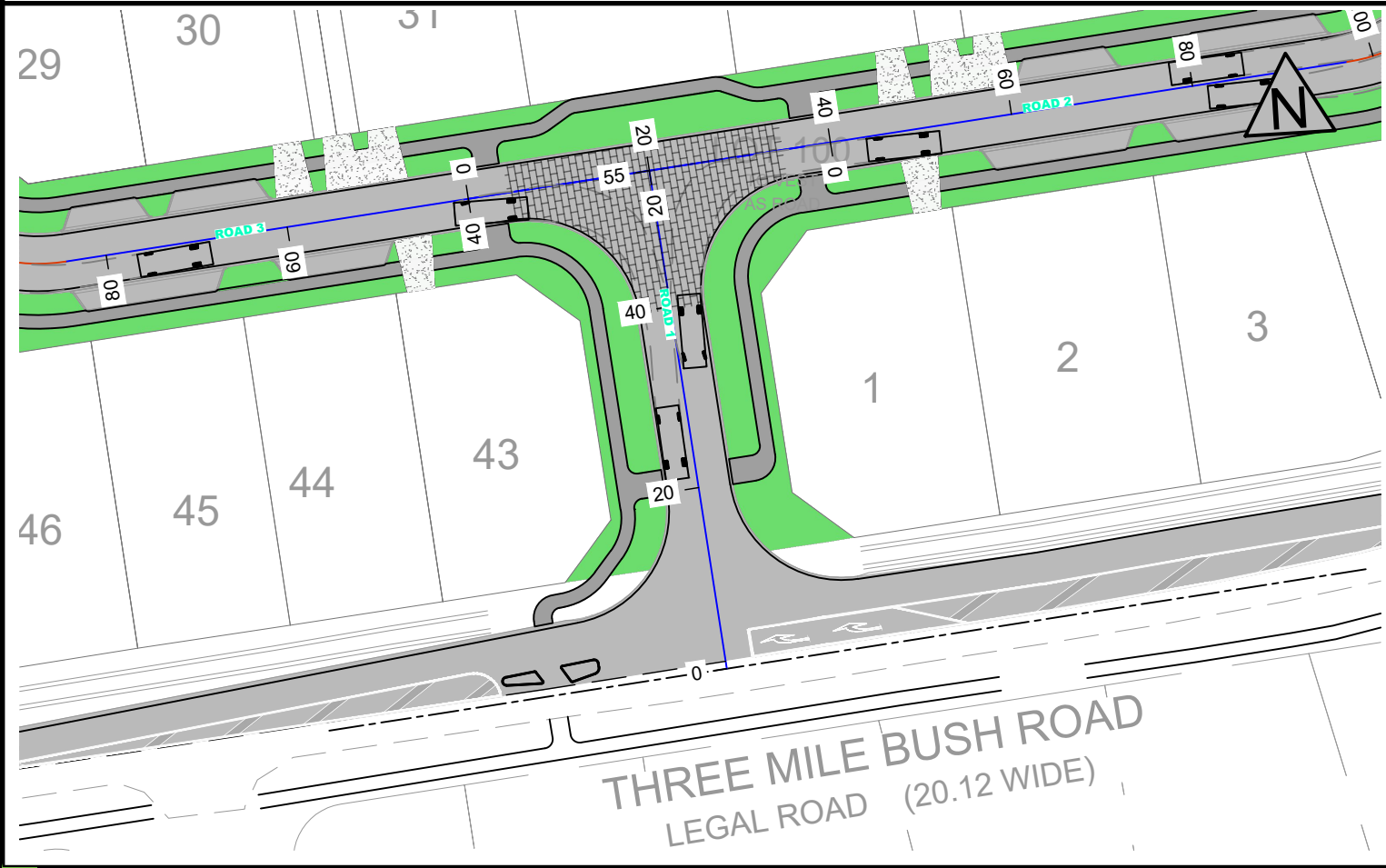
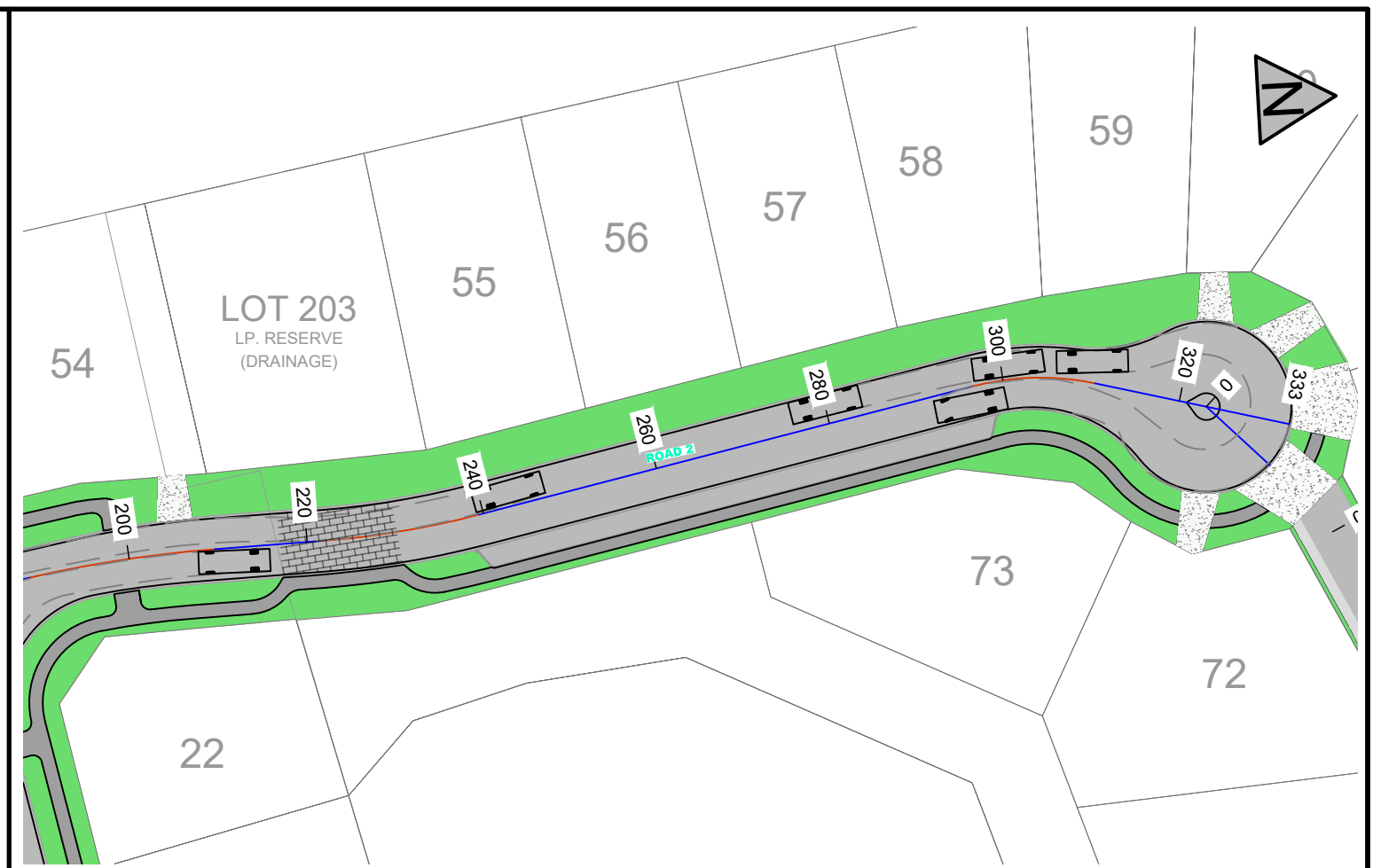
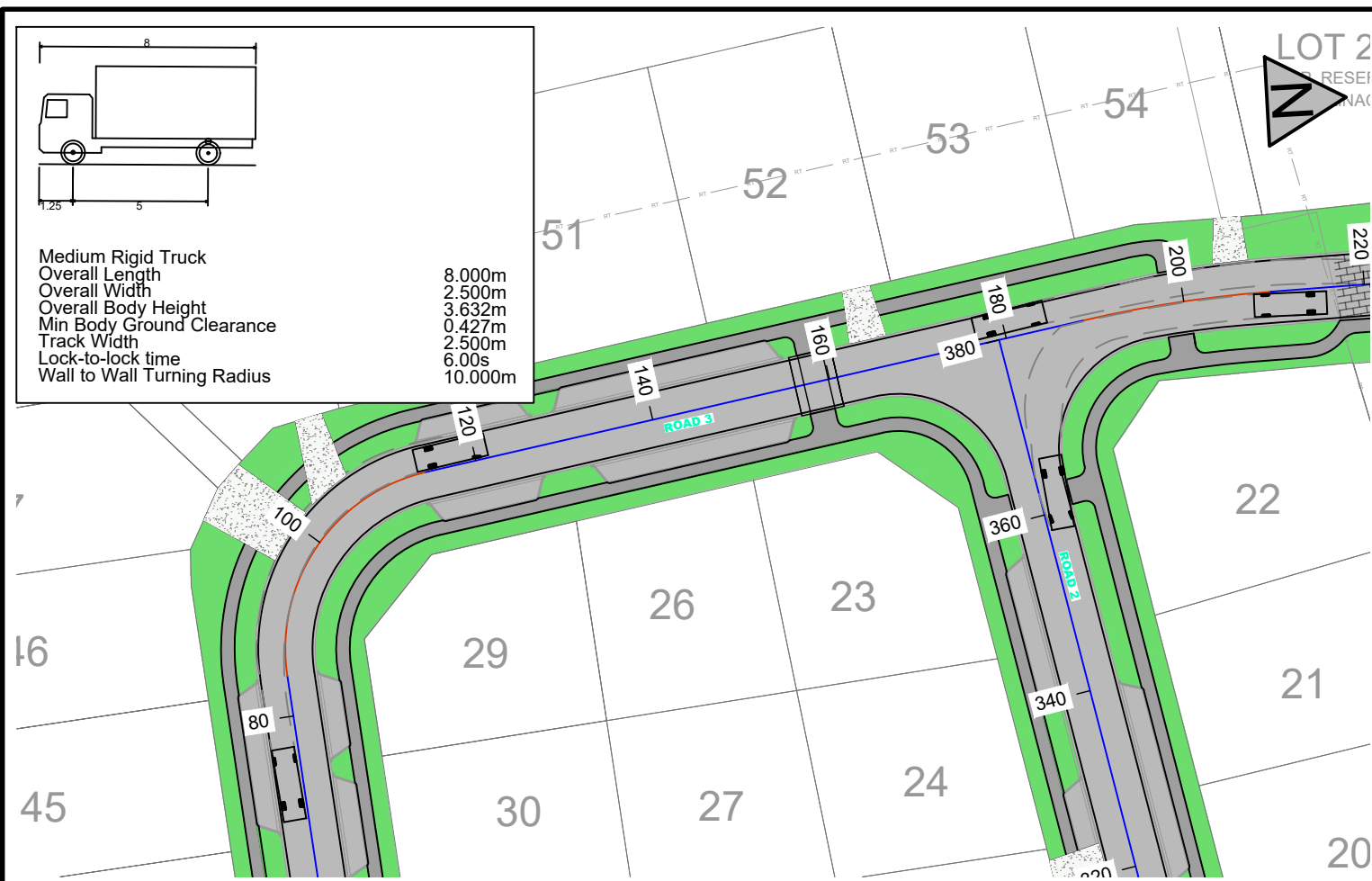
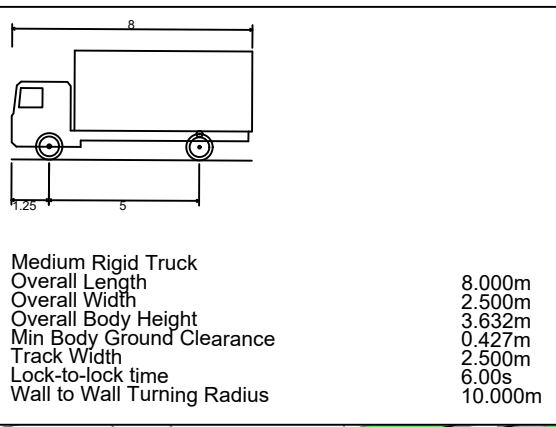


**Blue Wallace Surveyors Ltd.**  
 25 Harwood Street, P O Box 38,  
 Hamilton Central, HAMILTON.  
 Phone (07) 839 7799, Fax (07) 839 4455

Datum: Circuit: Mt Eden 2000			
Height: One Tree Point Datum			
Resource Consent Number: .....			
BW Ref.	Stg.	Purp.	Dwg. #
20183-01-RC-307			3

S:\2020\2018302\_ENGINEERING\1\_DRAWINGS\1\_PLOTTING DRAWINGS\20183-EN-01-300-0-ROADING.DWG





Size	A3	Scale	1:750	Date	July 2021		
No.	Amendment	Init.	Date	Designed	JMC		
1	Issued for resource consent	JMC	29/07/21	Drawn	JMC		
2	Updated Road Curve Radii	JMC	19/08/21	Checked			
3	Removed Lots 62, 63 & 69	JMC	30/03/22	Approved			

**Resource Consent**  
**Turning Circles**  
 189 Three Mile Bush Road, Kamo, Whangarei  
 Prepared for: Hurupaki Holdings Ltd

**Blue Wallace Surveyors Ltd.**  
 25 Harwood Street, P O Box 38,  
 Hamilton Central, HAMILTON.  
 Phone (07) 839 7799, Fax (07) 839 4455

Datum: Circuit: Mt Eden 2000	
Height: One Tree Point Datum	
Resource Consent Number: .....	
BW Ref.	Stg. Purp. Dwg. # Revision:
20183-01-RC-308	3

S:\2020\20183-02\_ENGINEERING\1\_DRAWINGS\PLOTTING DRAWINGS\20183-EN-01-300-0-ROADING.DWG