




PT LOT 4
DP 99045
(RT. NA93D/53)
HURUPAKI LTD.



Contour Interval	
Major:	2.0m
Minor:	0.5m

Size	A3	Scale	1:1500	Date	May 2021
No.	Amendment	Init.	Date	Designed	JMC
1	Issued for Resource Consent	JMC	10/05/21	Drawn	JMC
2	Removed former lots 62,63 & 69	JMC	31/03/22	Checked	CN
3				Approved	

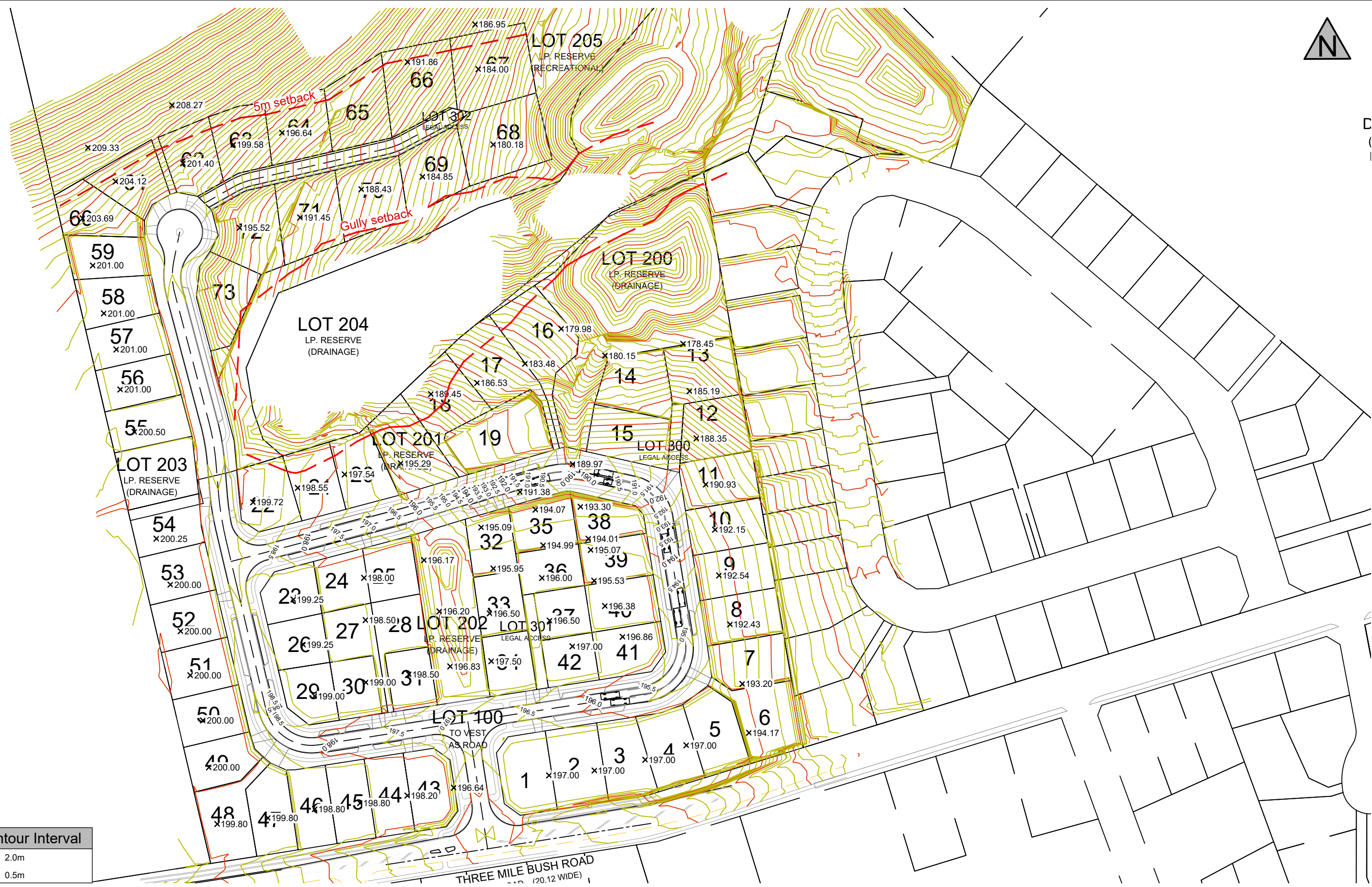
Resource Consent Plan
Existing Site
189 Three Mile Bush Road, Kamo, Whangarei
Prepared for: Hurupaki Holdings Ltd



Blue Wallace Surveyors Ltd.
25 Harwood Street, P O Box 38,
Hamilton Central, HAMILTON.
Phone (07) 839 7799, Fax (07) 839 4455

Datum: Circuit: Mt Eden 2000	
Height: One Tree Point Datum	
Resource Consent Number:	
.....	
BW Ref.	Stg. Purp. Dwg. # Revision:
20183-01-RC-200	2

S:\2020\20183\2. ENGINEERING\1. DRAWINGS\1. PLOTTING DRAWINGS\20183-EN-01-200-0-EARTHWORKS.DWG

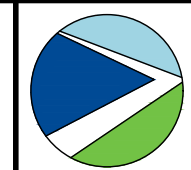


3)
D.

Contour Interval	
Major:	2.0m
Minor:	0.5m

Size	A3	Scale	1:1500	Date	May 2021
No.	Amendment	Init.	Date	Designed	JMC
1	Issued for Resource Consent	JMC	10/05/21	Drawn	JMC
2	Removed former Lots 62, 63 & 69	JMC	31/03/21	Checked	CN
3				Approved	

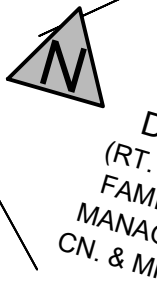
Resource Consent Plan
Design Contours
 189 Three Mile Bush Road, Kamo, Whangarei
 Prepared for: Hurupaki Holdings Ltd



Blue Wallace
Surveyors Ltd.
 25 Harwood Street, P O Box 38,
 Hamilton Central, HAMILTON.
 Phone (07) 839 7799, Fax (07) 839 4455

Datum: Circuit: Mt Eden 2000	
Height: One Tree Point Datum	
Resource Consent Number:	
.....	
BW Ref.	Stg. Purp. Dwg. # Revision:
20183-01-RC-201	2

S:\2020\20183-01-ENGINEERING\1. DRAWINGS\1. PLOTTING\DRAWINGS\20183-EN-01-200-0-EARTHWORKS.DWG



PT LOT 4
DP 99045
(RT. NA93D/53)
HURUPAKI LTD.

Surface Analysis: Elevation Ranges				
Number	Colour	Minimum Depth (m)	Maximum Depth (m)	Volume (m³)
1	Dark Red	-6.00	-3.00	3310
2	Red	-3.00	-2.00	4359
3	Light Red	-2.00	-1.00	9465
4	Lighter Red	-1.00	-0.25	15475
5	Very Light Red	-0.25	-0.05	5996
6	White	-0.05	0.05	2966
7	Light Green	0.05	0.25	4376
8	Light Green	0.25	1.00	8764
9	Light Green	1.00	2.00	4740
10	Light Green	2.00	3.00	1758
11	Dark Green	3.00	4.35	328

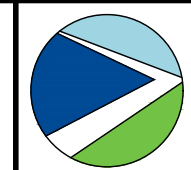
Volume
 Base Surface EG 20210121 -200mm
 Comparison Surface Combined Finished Level Subgrade Surface
 Cut Factor 1.000
 Fill Factor 1.250
 Cut volume (adjusted) 40282.353 Cu. M.
 Fill volume (adjusted) 26595.828 Cu. M.
 Net volume (adjusted) 13686.525 Cu. M.<Cut>
 Cut volume (unadjusted) 40282.353 Cu. M.
 Fill volume (unadjusted) 21276.662 Cu. M.
 Net volume (unadjusted) 19005.691 Cu. M.<Cut>

Contour Interval
 Major: 2.0m
 Minor: 0.5m



No.	Amendment	Init.	Date	Designed	JMC
1	Issued for Resource Consent	JMC	10/05/21	Drawn	JMC
2	Updated Cutfill figures	JMC	27/01/22	Checked	CN
3	Removed former Lot 62, 63 & 69	JMC	31/03/22	Approved	

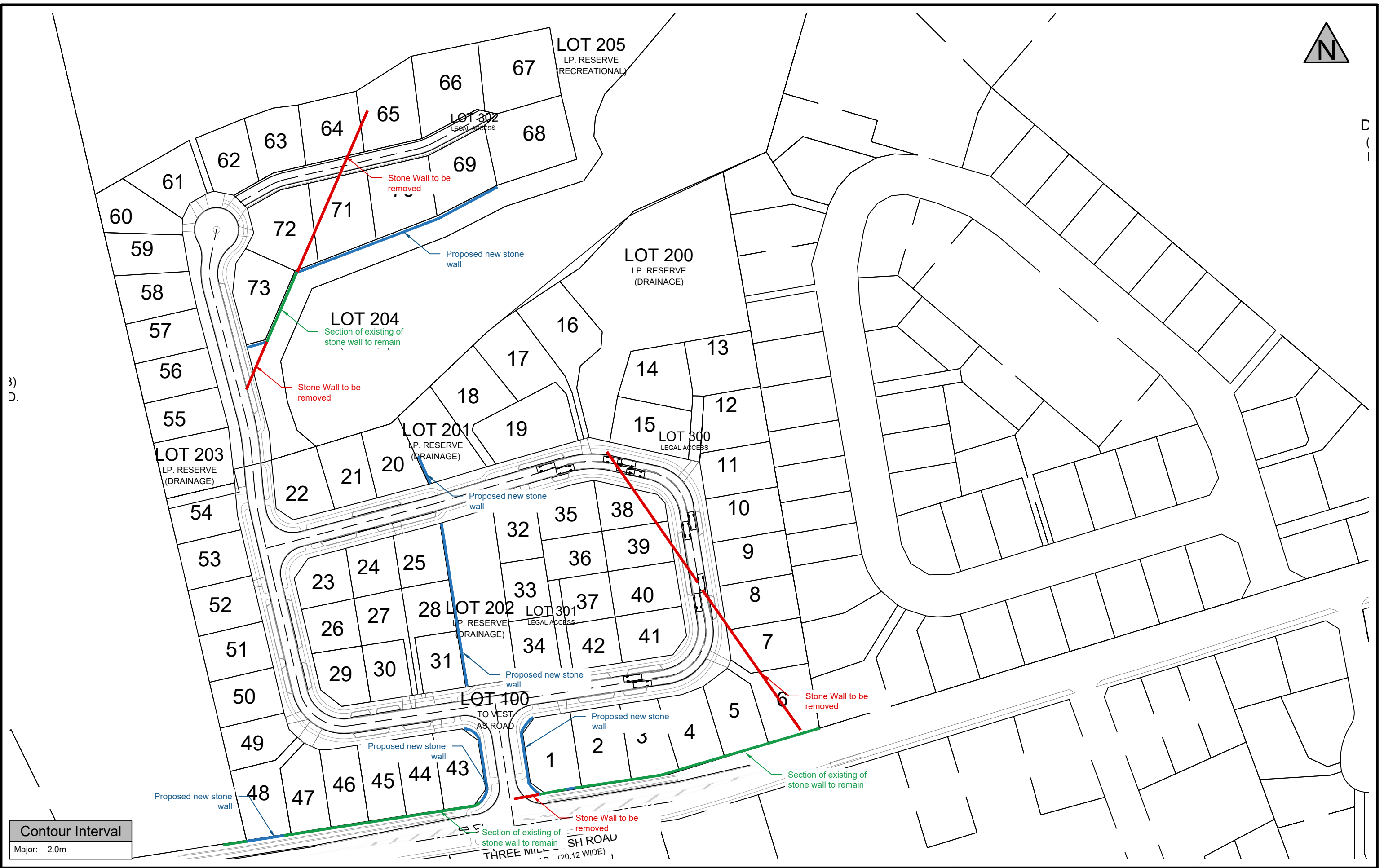
Resource Consent Plan
Cut/Fill
 189 Three Mile Bush Road, Kamo, Whangarei
 Prepared for: Hurupaki Holdings Ltd



Blue Wallace Surveyors Ltd.
 25 Harwood Street, P O Box 38,
 Hamilton Central, HAMILTON.
 Phone (07) 839 7799, Fax (07) 839 4455

Datum: Circuit: Mt Eden 2000	
Height: One Tree Point Datum	
Resource Consent Number:	
BW Ref.	Stg. Purp. Dwg. # Revision:
20183-01-RC-202	3

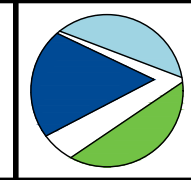
S:\2020\20183\2. ENGINEERING\1. DRAWINGS\1. PLOTTING DRAWINGS\20183-EN-01-200-0-EARTHWORKS.DWG



Contour Interval
Major: 2.0m

Size	A3	Scale	1:1500	Date	March 2022	
No.	Amendment	Init.	Date	Designed	JMC	
1	Issued for Resource Consent	JMC	15/03/22	Drawn	JMC	
2	Removed former Lots 62, 63 & 69	JMC	31/03/22	Checked	CN	
3				Approved		

Resource Consent Plan
Stone Wall Layout
189 Three Mile Bush Road, Kamo, Whangarei
Prepared for: Hurupaki Holdings Ltd



Blue Wallace Surveyors Ltd.
25 Harwood Street, P O Box 38,
Hamilton Central, HAMILTON.
Phone (07) 839 7799, Fax (07) 839 4455

Datum: Circuit: Mt Eden 2000	
Height: One Tree Point Datum	
Resource Consent Number:	
BW Ref.	Stg. Purp. Dwg. # Revision:
20183-01-RC-203	2

S:\2020\201832_ENGINEERING\1_DRAWINGS\PLOTTING DRAWINGS\20183-EN-01-200-0-EARTHWORKS.DWG