

# PLACE MAKING Hikurangi

## PLAN IN BRIEF

We are seeking feedback on the draft Hikurangi Placemaking Plan. Does the Hikurangi Placemaking Plan reflect your future vision for the area? Are we on the right track? Are we missing anything?

Tell us what you think at [www.wdc.govt.nz/Placemaking](http://www.wdc.govt.nz/Placemaking)

Hikurangi has been identified as a moderate growth node within the Whangārei Growth Strategy.

## INTRODUCTION

The Hikurangi Placemaking Plan is a response to the growth and changes that are happening in Hikurangi. The Hikurangi Placemaking Plan is a 20-30-year vision for how Hikurangi will change, grow and develop.

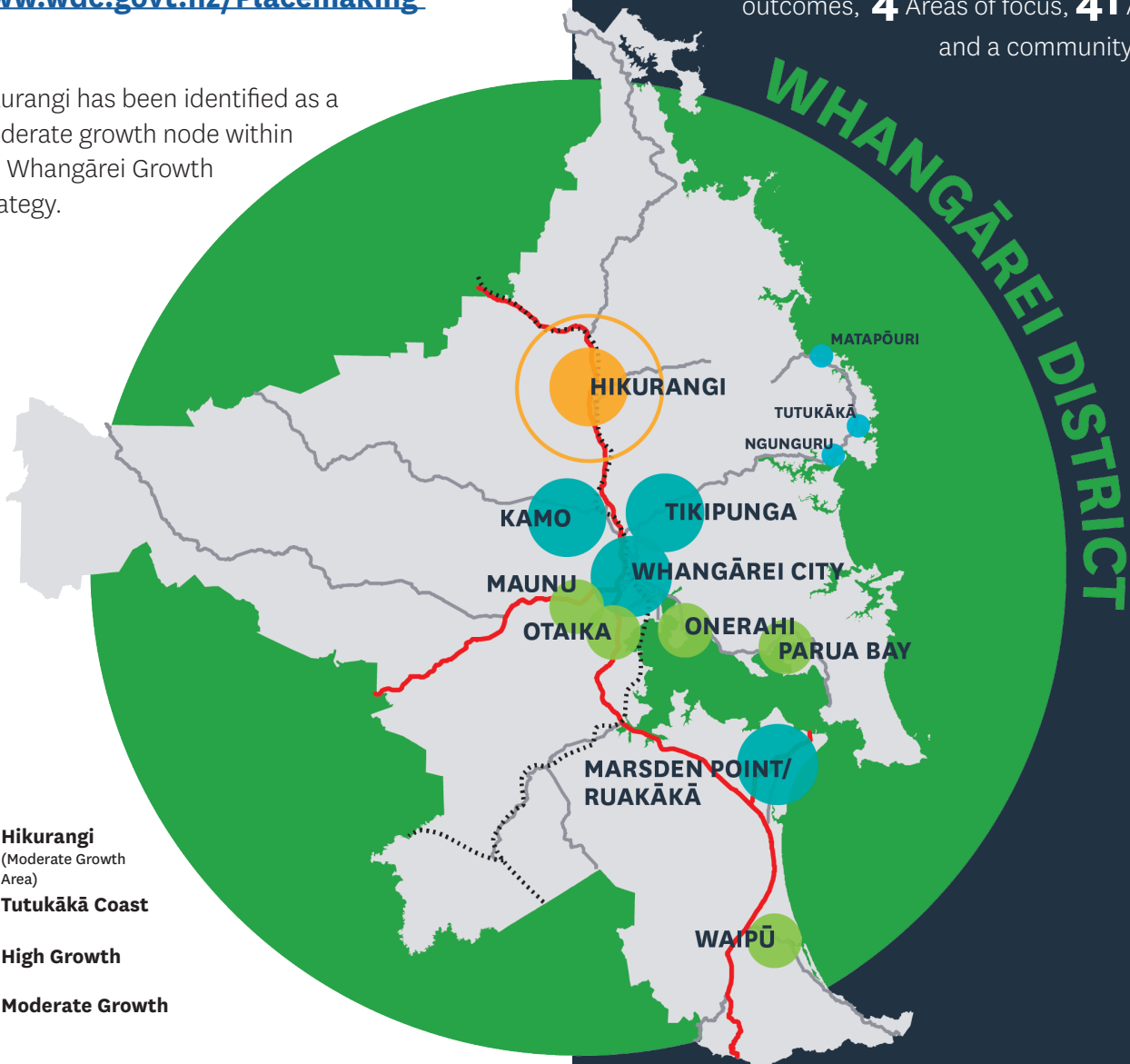


By 2051, Hikurangi's population is estimated to grow from **3,313** to **5,017**



By 2051, Hikurangi's dwellings are estimated to grow from **1,216** to **1,937**

The Hikurangi Placemaking Plan contains **3** key outcomes, **4** Areas of focus, **41** Actions and a community toolkit



# 3 KEY OUTCOMES



## Connectivity

Hikurangi will be a walkable, safe, legible and accessible place with strong connections to Whangārei City Centre, the Tutukaka Coast and Glenbervie Forest.



## Heritage and Character

Hikurangi will be celebrated for its distinctive Heritage, Character, Culture and Environment.



## Destination

Hikurangi will be considered a unique and vibrant destination for future residents and visitors.

# 4 AREAS OF FOCUS

## Hikurangi Village Centre

Improve and uplift the profile, appearance and connectivity of the main streets of Hikurangi Village to celebrate its unique character, promote activity and walkability.

## Hikurangi Sports Hub

Improve the connectivity and usability of the Hikurangi Sports park and the multiple sporting facilities in the direct area.

## Lake Waro

Uplift the Lake Waro area as a key feature and amenity within Hikurangi. Continue to develop the area as a key amenity, building on the facilities and improving access and connectivity

## SH1 Connections

Improve connectivity and safety between Hikurangi village and SH1. Support the community to enhance Hikurangi's profile as a destination through marketing and wayfinding.

# 41 ACTIONS

9 Ongoing/Funded Actions

9 Planned Actions

14 Strategic Actions

9 Development Guidance

Actions are structured around who leads/drives them:



Whangārei  
District Council  
(or other  
Agencies)



Community or  
Community  
Groups



Developers  
or Private  
Sector

## ONGOING / FUNDED ACTIONS

- Footpath improvements within the Hikurangi Village.
- Identification of heritage buildings and character assessments.
- Work with community and Northland inc. to develop a Hikurangi Heritage trail.
- Hikurangi Sports Hub user forum and master plan.
- Improvement of Lake Waro facilities.
- Hikurangi Skate Park upgrade.
- Work with community and Northland inc. to promote and market Hikurangi as a destination.
- Work with hapū to improve environmental outcomes of the Hikurangi Wairepo/Swamp.
- Riparian and community planting.