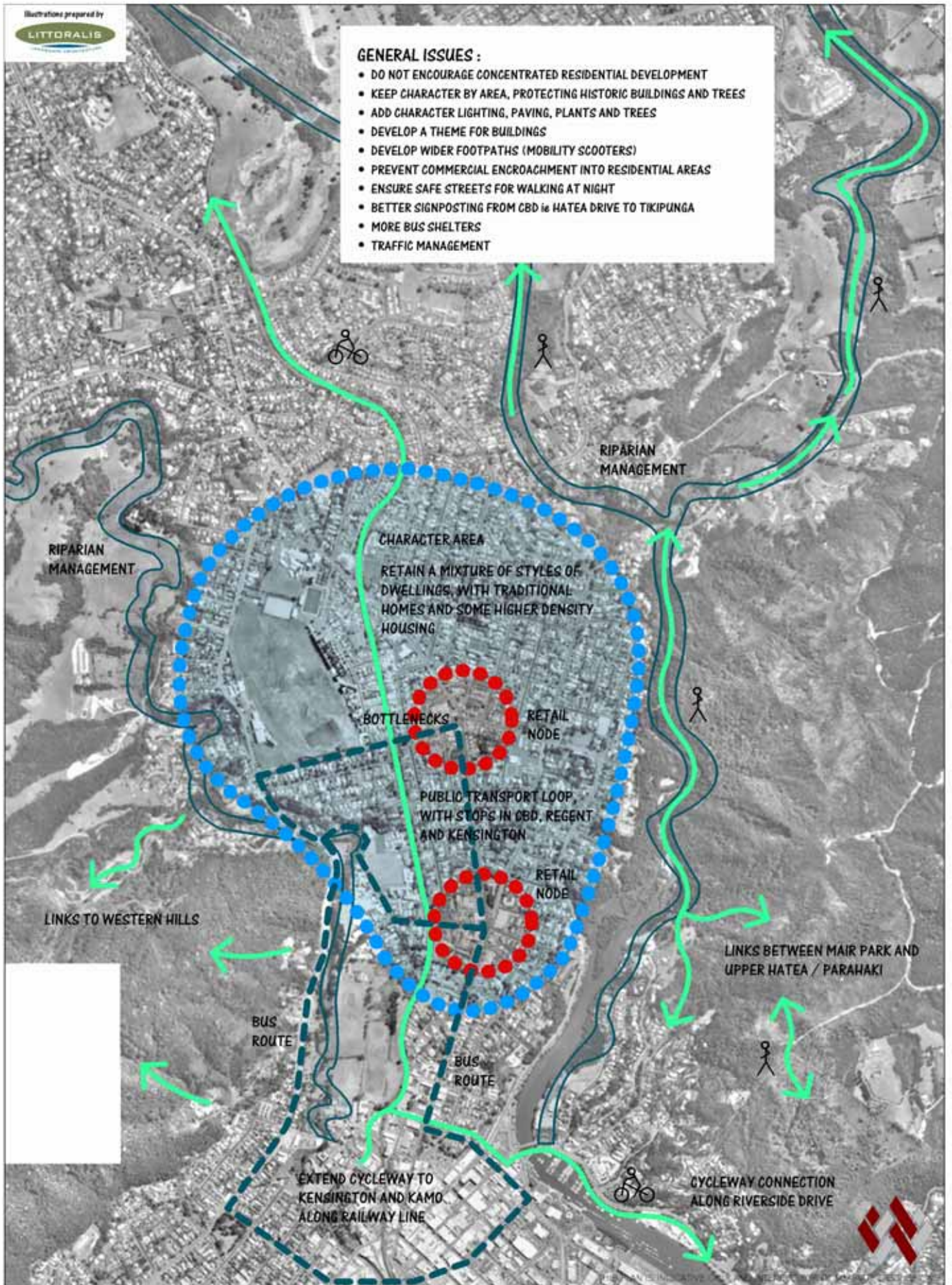


GENERAL ISSUES :

- DO NOT ENCOURAGE CONCENTRATED RESIDENTIAL DEVELOPMENT
- KEEP CHARACTER BY AREA, PROTECTING HISTORIC BUILDINGS AND TREES
- ADD CHARACTER LIGHTING, PAVING, PLANTS AND TREES
- DEVELOP A THEME FOR BUILDINGS
- DEVELOP WIDER FOOTPATHS (MOBILITY SCOOTERS)
- PREVENT COMMERCIAL ENCROACHMENT INTO RESIDENTIAL AREAS
- ENSURE SAFE STREETS FOR WALKING AT NIGHT
- BETTER SIGNPOSTING FROM CBD to HATEA DRIVE TO TIKIPUNGA
- MORE BUS SHELTERS
- TRAFFIC MANAGEMENT



MAP 3

WHANGAREI DISTRICT URBAN GROWTH STRATEGY

Issues and Options : Regent Mairtown Otangarei and Kensington Residents

September 2003

Scale : 1 : 12500 (A3)