

# Microbiological Analysis

## Directions for taking samples

## Technical note 1

- 1. Select a sample point:** This will depend on the reason for testing the water. If it is to assess a source of water as a potential supply, then take the water directly from the source. If it is to determine the quality of an existing supply, take the sample directly from the tap.
- 2. Use a sterile bottle:** We can supply sterilised bottles for collection. If you do not have one, boil a glass bottle (including the cap) for three minutes, allow to cool. Do not contaminate the bottle after boiling. (Approximately 200mL is required for a test.)
- 3. Run the tap:** If taking the sample from a tap, let the tap run for 2 - 3 minutes before taking the sample. This is to clear any water sitting in the pipeline to ensure a fresh representative sample. If taking several samples, label each bottle clearly.
- 4. Fill the bottle:** Take the sample, filling the bottle to just below the neck. Leave an air space above the water level before replacing the cap being careful not to contaminate the bottle by placing your fingers or anything else inside the bottle or cap during the sampling process.
- 5. Return the sample:** Return the sample to the Laboratory as soon as possible.

Delivery within six hours is recommended, but if not possible overnight delivery is acceptable if the sample is chilled. In all cases the water sample must be analysed within 24 hours of collection.

**Delivery address is: WDC Laboratory, 79 Kioreroa Rd, Whangarei.**

### 6. Complete the Sample Submission Form

When completing the form include the following details:

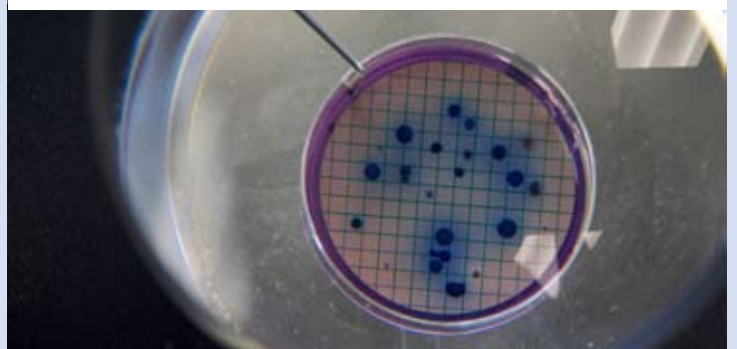
- Name, postal address & phone number of person requiring analysis
- Where the sample comes from - sample source
- Date and time of sample collection.

To indicate whether your water is safe to drink or to determine compliance with New Zealand Drinking Water Standards, the water will be tested for E coli. Contact the Laboratory for current pricing.

A written report will be issued. If required other analyses can be arranged, please contact us for more details.

### Important

A micro test takes 24 hours from time sample is received in lab. Please be aware of this when sending samples. Generally, we only accept samples from Monday to Friday between the hours of 8am to 3.30pm.



Whangarei District Council Laboratory