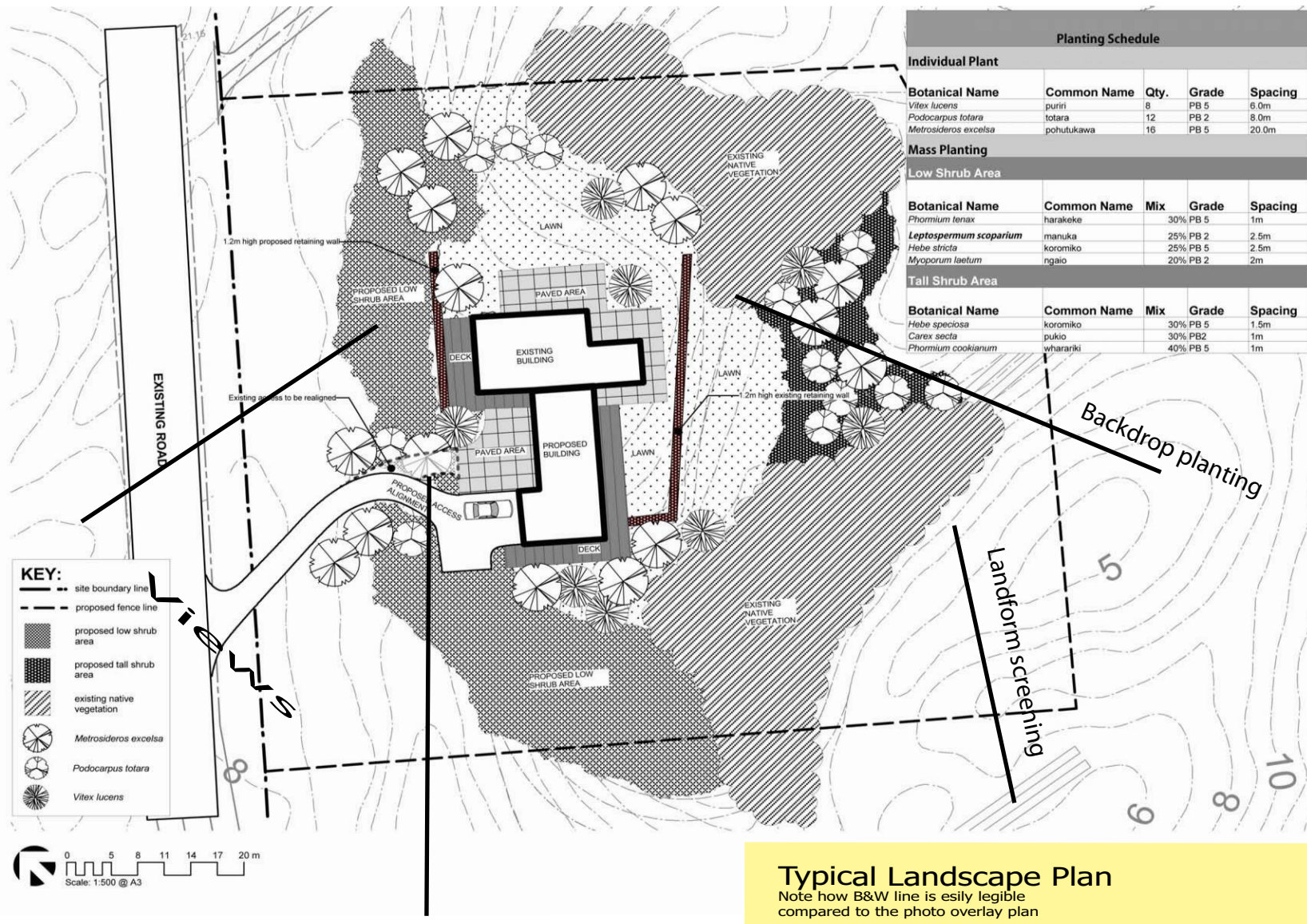
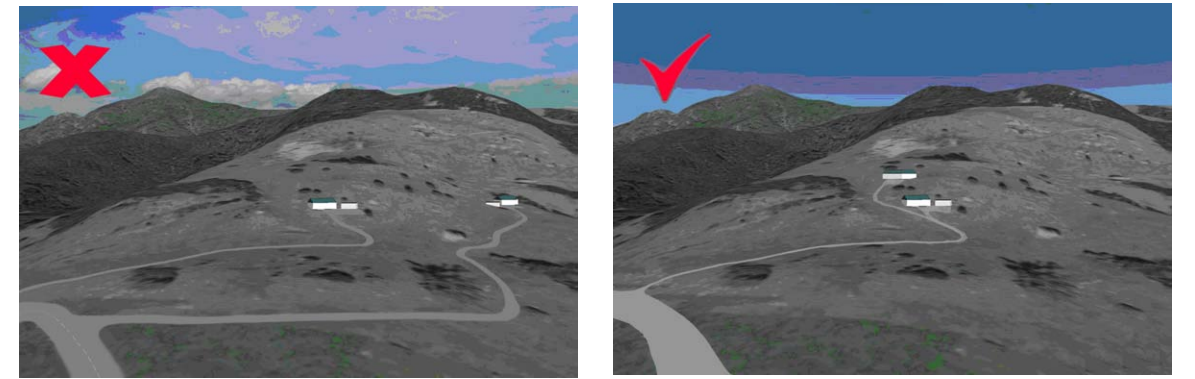


LANDSCAPE GUIDELINES

Design & Implementation - Site Layout considerations



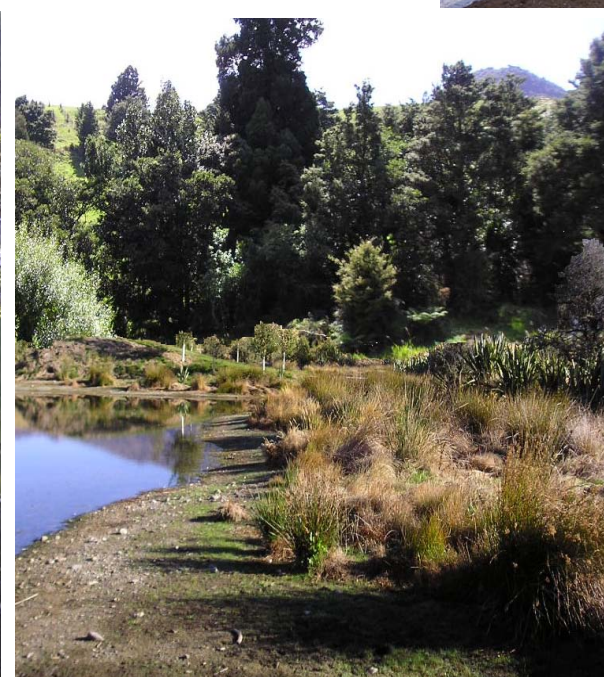
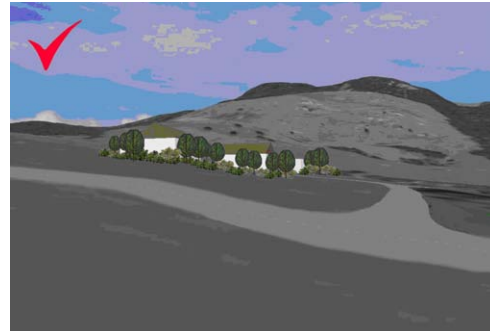
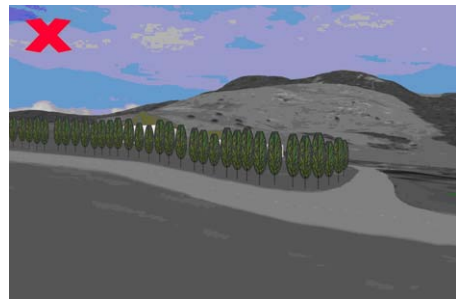
Consider shared access to lots and sitting the access ways into the contour of the land. A rural road style, without curb and channel meets the rural character & is less visually intrusive.



Water filtering effects such as planted or grass swales can make effective use of natural infrastructure approaches to managing effects of access & earthworks.



Clustered plantings should be used to reduce the prominence of buildings and structures rather than dense hedgerows that block views across the landscape.



Simple block planting combined with ground contour and consideration of climate control, water filtering effects, shade, shelter, view framing and privacy screening can achieve an effective integrated outcome without the requirement for huge areas of planting. Note the ground modelling used in conjunction with planting of different heights and forms, in the photographic examples.